

Engineering & Application note

Issue Date: October '08

Subject: PMU Editor Upgrade to v2.31 (070720)

Relevant Products: PMU Editor v2.31 (070110) or previous

Article Description

This document contains notes for users upgrading to PMU Editor v2.31 (070720) from any previously issued version. It is also required reading for new users installing v2.31 (070720) for the first time.

Article Details

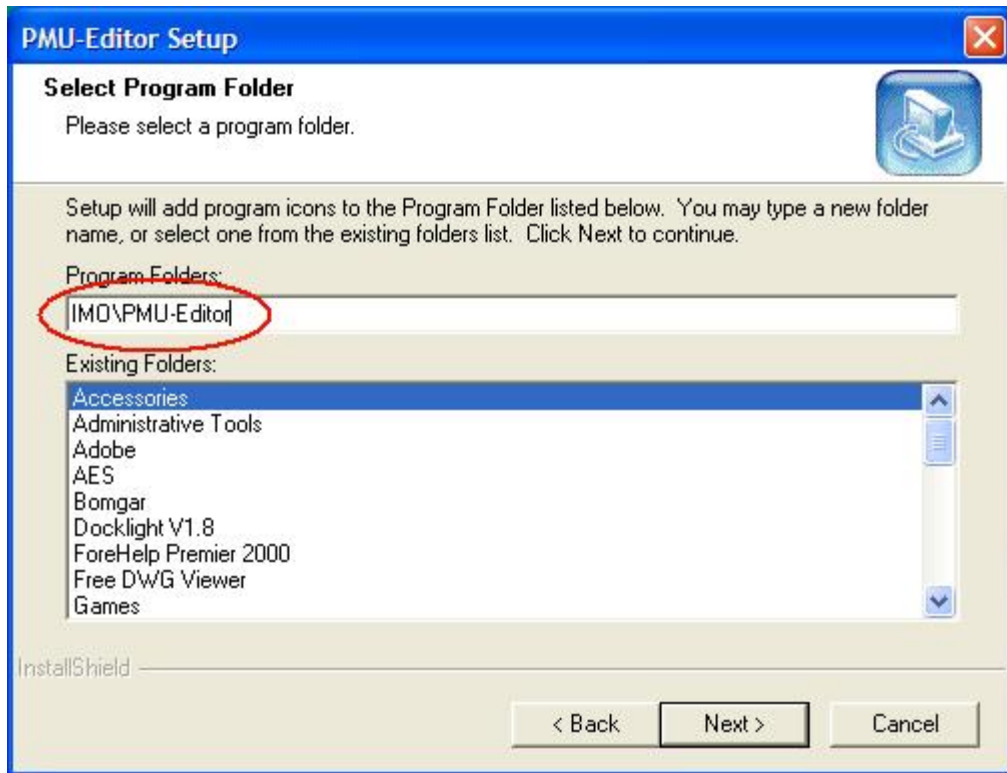
Older Versions

It is recommended that any previous versions of PMU Editor are uninstalled from the machine prior to installing the new software. This is done from the Windows Control Panel, 'Add/Remove Software' option.

Installing PMU Editor v2.31 (070720)

The software is supplied in a self-extracting executable file. Double clicking on the file starts installation. Follow the on screen instructions to install the software.

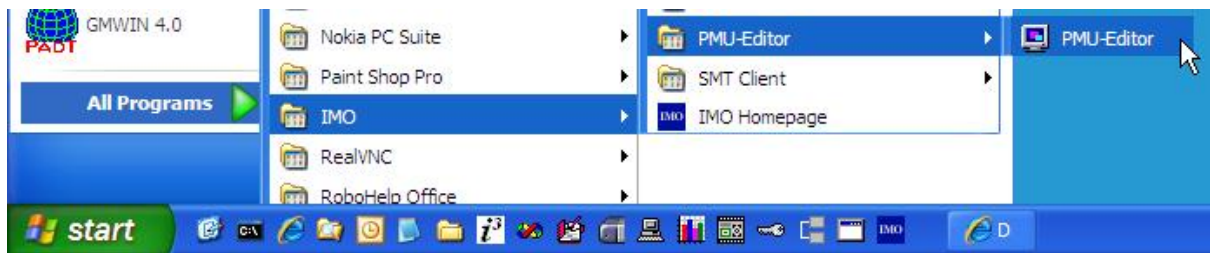
By default the software appears in the root of the 'All Programs' menu in Windows. Ideally all of your IMO software is installed into the 'IMO' subfolder. If you wish to move the menu shortcut here, you can either move it by hand after installation by dragging it within the menu, or during installation you can select the target folder:



Simply enter 'IMO\' in front of the folder name.

Running the Software

The software is now located within the 'IMO' folder in the start menu, 'all programs' section, as follows:



Your upgraded version of PMU Editor is now ready to use