

IMO

 Established 1972

PRODUCT CATALOGUE 7th Edition

www.imoautomation.com

Email: sales-na@imopc.com

 Call: 404 476 8810

 Call: 905 799 9237



The Future In Control

IMO PRODUCT CATALOGUE

IMO Precision Controls

Often copied, never equaled... since 1972



Founded in 1972, IMO has grown from its UK base to become a global manufacturer and supplier of industrial control and electronic components and systems. Our history is one of innovation. Whether it is the first ever BT Type 47 Approved relay or the first ever compact AC inverter for motor speed control, IMO has always been focused on breaking barriers. That philosophy extends to the company's service model with features such as advanced online customer ordering and visibility, integrated logistics and the industry's first global third party fulfillment agreement described by the trade press as "a deal ahead of its time".

Our quality assured manufacturing sites ensure IMO products continue to be recognized for quality and reliability. Backed by unique warranty periods of up to Five Years and in compliance with all relevant international standards and approvals, customers specifying IMO products can do so with the knowledge and security that they are making a no compromise selection.

We succeed through the success of our customers. Blue Chip manufacturers the world over rely on IMO to help them achieve higher levels of innovation, competitiveness and reliability. It is a philosophy that continues to deliver results and one which creates close and long lasting relationships with our customers world-wide.



Leading the way...

- Over 15,000 products
- Worldwide Technical Support
- Amongst the best warranties in the industry
- Iconic IMO trade counter display stands
- Promotional materials (including product brochures, window stickers, counter mats, posters, product displays and case studies)



Seamlessly integrated...

IMO's custom built Pack'N'Track system integrates our logistics seamlessly to UPS enabling same-day dispatch and total tracking visibility from the moment a delivery note is printed.

The customised programme ensures that UPS just collect and deliver from our extensive logistics facility located in Atlanta, GA. providing the kind of efficiency needed to ensure our customers get their products on-time, every time. It's just another way that we are making the customer experience better!



Your success is our success...

Our customers' competitive challenges are of paramount importance to our own success so we work tirelessly to help our customers differentiate their product, improve their service offering and grow their market share. Our approach has allowed us to enjoy long-term relationships with some of the largest blue-chip companies in the world and to help tomorrow's success stories on their journey to prominence.

With customer relationships that, in some cases, go back over 30 years we are proud to have earned and maintained the trust of so many of our customers for so long. Regardless of the evolution of technology and market forces, the basic principles at the heart of our business relationships always remain constant.



Unrivalled service... professionally delivered

IMO has always excelled in providing the highest level of personalised service to every customer, and we believe it is this service that truly sets us apart from the competition.

When you become a customer of IMO, you also become part of the family. Our highly trained customer service representatives are quick to learn your requirements, and concentrate on the one thing that we think brings you back to IMO each time, and that is ensuring your happiness through delivering the right products, at the right time, the right price and with a huge amount of care and attention that simply isn't available anywhere else.

Our team of technical specialists know our products inside out, and have years of experience in the field as well as specifically liaising with and helping customers resolve issues to ensure the best possible outcome for them.

A global network...

The IMO brand is increasingly recognised around the world for quality, reliability and cost efficiency, and we continue to invest in our growth in both home and international markets in order to best meet the expectations of our customers.

Global office locations: UK, USA, Australia, Canada, France, Italy & South Africa.
Global distribution network locations: Austria, Brazil, Bulgaria, China, Cyprus, Denmark, El Salvador, Finland, Germany, Greece, Hungary, Ireland, Mexico, Netherlands, Pakistan, Portugal, Romania, Spain, Switzerland, Tunisia, Ukraine & Vietnam.



Product training...

IMO Precision Controls offers in-house or on-site training courses for our Drives & Automation products, including all HMI's, PLC's, Intelligent Controllers and Jaguar AC Inverter Drives.

Training modules can be standard or higher level, tailored to customer's specific requirements. They are designed to familiarise customers with the use and programming of IMO intelligent products. Each module is usually based on one product range.

To find out more about IMO bespoke training courses, contact IMO.

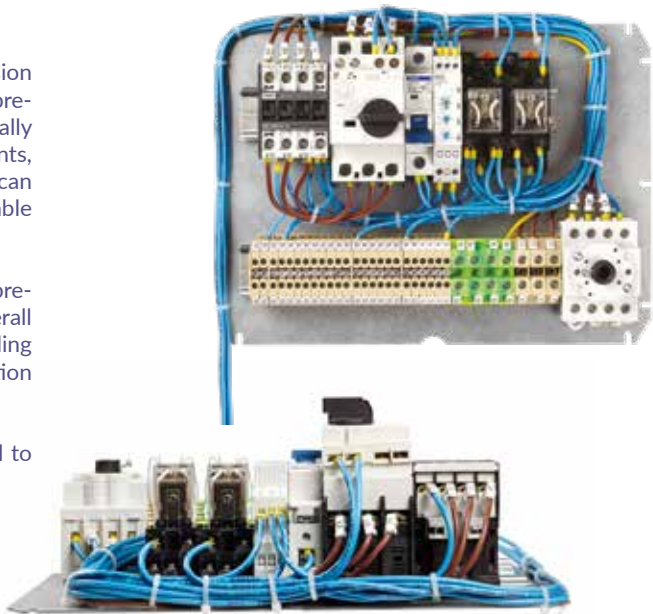


Custom solutions...

Satisfying an ever-growing trend in the market, the IMO Assembly Division provides bespoke solutions to customer requirements for components pre-assembled onto mounting rails, or into enclosures. We can offer totally customised solutions which can include many different control components, such as contactors, relays, timers, miniature circuit breakers etc. IMO can also offer a complete custom wiring solution from prepared cables and cable looms to crimpings, terminations and housings.

New and old customers can seriously benefit from outsourcing both pre-assembled components and prepared wiring. Benefits include a lower overall cost with reduced installation times, lower inventory expense with no tooling investment, and total peace of mind knowing that every assembled solution comes 100% pre-tested.

Whatever your requirement, from a simple, cable assembly or single rail to highly complex solutions, contact IMO to discuss your needs.





IMO Automation North American Sales Offices & Logistics Centers

United States of America

Suite 112
5910 Shiloh Road East
Alpharetta, GA 30005

Tel: 404 476 8810

Email: sales-na@imopc.com
Web: www.imoautomation.com

Canada

1B-701 Rossland Road East
Suite #608
Whitby, Ontario L1N 9K3

Tel: 905 799 9237

Email: sales-na@imopc.com
Web: www.imopc.com

Need Some Technical Application Support?

Call 404-476-8812
or Email support-na@imopc.com



Panel Product Range	p.6-27
UL 489 & UL 1077 Miniature Circuit Breakers.....	p.6-7
DIN Rail Terminals.....	p.8-9
Single & Three Phase Power Supplies.....	p.10
AC Disconnects & Changeover Switches.....	p.11-12
TRUE DC Solar Isolators.....	p.13-14
Distribution Boxes.....	p.14
Contactors & Thermal Overload Relays.....	p.15-19
Modular Heating & Lighting Contactors.....	p.20
Motor Circuit Breakers.....	p.21
Push Buttons, Rotary Knobs & Pilot Lights.....	p.22-23
Motor Starters.....	p.24
Industrial Power Relays & Plug-In Relays.....	p.25-26
Sockets for Industrial Plug-In Relays.....	p.27
CamSwitches.....	p.28
Timers.....	p.29

AC Variable Speed Drives Product Range	p.30-31
SD1 AC Variable Speed Drives.....	p.30
HD2 AC Variable Speed Drives.....	p.31

Automation Product Range	p.32-39
iSmart Intelligent Relays.....	p.32
iView Advanced HMIs.....	p.33
i3 Intelligent Control Stations.....	p.33-34
i3 Remote Machine Interface.....	p.35
Remote I/O.....	p.35
LimitSwitches.....	p.36
Safety Limit Switches.....	p.37
ProximitySensors.....	p.38
Photoelectric Sensors.....	p.39

IMO PRODUCT CATALOGUE

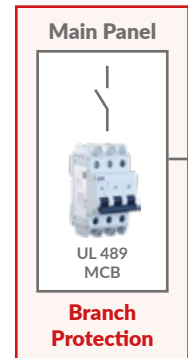
UL 489 Miniature Circuit Breakers

Designed for protection of electrical installations against overcurrent in the branch circuit, whilst also allowing motor branch circuit protection, this high performing range of DIN rail mountable MCBs have been manufactured in accordance with UL 489.

- Available from 0.5 Amps to 63 Amps
- Thermo-magnetic overcurrent protection
- 10kA short circuit protection
- RoHS compliant
- B, C & D Type tripping curves
- Contact position indicator

Circuit protection at panel level requires higher short circuit protection (interrupting capacity), and as such UL 489 approved MCBs must pass a series of calibration, overload, endurance and short circuit tests that are considerably more rigorous than UL 1077. Part of achieving UL 489 compliance is the addition of an extension to the body moulding in between each contact for increased isolation.

UL 489 approved MCBs can protect multiple devices at a time, such as an entire control panel. Classified for branch circuit use, they can also be used for outlets or for feeding utilization equipment. UL 489 approved MCBs can act as the final overcurrent device dedicated to protecting the branch circuits and outlets. It doesn't require the use of an additional backup overcurrent device.



10kA MCB **UL 489 C Curve** 1 Pole



Manufactured in accordance
with UL 489
UL File No.: E495936



Part No.	Description
UB10C100.5A	10kA MCB UL 489 1 pole 0.5A C Curve
UB10C1001A	10kA MCB UL 489 1 pole 1A C Curve
UB10C101.6A	10kA MCB UL 489 1 pole 1.6A C Curve
UB10C1002A	10kA MCB UL 489 1 pole 2A C Curve
UB10C1003A	10kA MCB UL 489 1 pole 3A C Curve
UB10C1004A	10kA MCB UL 489 1 pole 4A C Curve
UB10C1005A	10kA MCB UL 489 1 pole 5A C Curve
UB10C1006A	10kA MCB UL 489 1 pole 6A C Curve
UB10C1007A	10kA MCB UL 489 1 pole 7A C Curve
UB10C1008A	10kA MCB UL 489 1 pole 8A C Curve
UB10C1010A	10kA MCB UL 489 1 pole 10A C Curve
UB10C1013A	10kA MCB UL 489 1 pole 13A C Curve
UB10C1015A	10kA MCB UL 489 1 pole 15A C Curve
UB10C1016A	10kA MCB UL 489 1 pole 16A C Curve
UB10C1020A	10kA MCB UL 489 1 pole 20A C Curve
UB10C1025A	10kA MCB UL 489 1 pole 25A C Curve
UB10C1030A	10kA MCB UL 489 1 pole 30A C Curve
UB10C1032A	10kA MCB UL 489 1 pole 32A C Curve
UB10C1040A	10kA MCB UL 489 1 pole 40A C Curve
UB10C1050A	10kA MCB UL 489 1 pole 50A C Curve
UB10C1060A	10kA MCB UL 489 1 pole 60A C Curve
UB10C1063A	10kA MCB UL 489 1 pole 63A C Curve

10kA MCB **UL 489 C Curve** 2 Pole



Manufactured in accordance
with UL 489
UL File No.: E495936



Part No.	Description
UB10C200.5A	10kA MCB UL 489 2 pole 0.5A C Curve
UB10C2001A	10kA MCB UL 489 2 pole 1A C Curve
UB10C201.6A	10kA MCB UL 489 2 pole 1.6A C Curve
UB10C2002A	10kA MCB UL 489 2 pole 2A C Curve
UB10C2003A	10kA MCB UL 489 2 pole 3A C Curve
UB10C2004A	10kA MCB UL 489 2 pole 4A C Curve
UB10C2005A	10kA MCB UL 489 2 pole 5A C Curve
UB10C2006A	10kA MCB UL 489 2 pole 6A C Curve
UB10C2007A	10kA MCB UL 489 2 pole 7A C Curve
UB10C2008A	10kA MCB UL 489 2 pole 8A C Curve
UB10C2010A	10kA MCB UL 489 2 pole 10A C Curve
UB10C2013A	10kA MCB UL 489 2 pole 13A C Curve
UB10C2015A	10kA MCB UL 489 2 pole 15A C Curve
UB10C2016A	10kA MCB UL 489 2 pole 16A C Curve
UB10C2020A	10kA MCB UL 489 2 pole 20A C Curve
UB10C2025A	10kA MCB UL 489 2 pole 25A C Curve
UB10C2030A	10kA MCB UL 489 2 pole 30A C Curve
UB10C2032A	10kA MCB UL 489 2 pole 32A C Curve
UB10C2040A	10kA MCB UL 489 2 pole 40A C Curve
UB10C2050A	10kA MCB UL 489 2 pole 50A C Curve
UB10C2060A	10kA MCB UL 489 2 pole 60A C Curve
UB10C2063A	10kA MCB UL 489 2 pole 63A C Curve

10kA MCB **UL 489 C Curve** 3 Pole



Manufactured in accordance
with UL 489
UL File No.: E495936



Part No.	Description
UB10C300.5A	10kA MCB UL 489 3 pole 0.5A C Curve
UB10C3001A	10kA MCB UL 489 3 pole 1A C Curve
UB10C301.6A	10kA MCB UL 489 3 pole 1.6A C Curve
UB10C3002A	10kA MCB UL 489 3 pole 2A C Curve
UB10C3003A	10kA MCB UL 489 3 pole 3A C Curve
UB10C3004A	10kA MCB UL 489 3 pole 4A C Curve
UB10C3005A	10kA MCB UL 489 3 pole 5A C Curve
UB10C3006A	10kA MCB UL 489 3 pole 6A C Curve
UB10C3007A	10kA MCB UL 489 3 pole 7A C Curve
UB10C3008A	10kA MCB UL 489 3 pole 8A C Curve
UB10C3010A	10kA MCB UL 489 3 pole 10A C Curve
UB10C3013A	10kA MCB UL 489 3 pole 13A C Curve
UB10C3015A	10kA MCB UL 489 3 pole 15A C Curve
UB10C3016A	10kA MCB UL 489 3 pole 16A C Curve
UB10C3020A	10kA MCB UL 489 3 pole 20A C Curve
UB10C3025A	10kA MCB UL 489 3 pole 25A C Curve
UB10C3030A	10kA MCB UL 489 3 pole 30A C Curve
UB10C3032A	10kA MCB UL 489 3 pole 32A C Curve
UB10C3040A	10kA MCB UL 489 3 pole 40A C Curve
UB10C3050A	10kA MCB UL 489 3 pole 50A C Curve
UB10C3060A	10kA MCB UL 489 3 pole 60A C Curve
UB10C3063A	10kA MCB UL 489 3 pole 63A C Curve

UL 489 & UL1077 Shunt Trips



To remotely switch off
the protection device



Part No.	Description
UB10-SH-110	110V AC Shunt Trip
UB10-SH-230	230V AC Shunt Trip

UL 489 & UL1077 Undervoltage Trips



Device protection when
rated voltage drops below 50%



Part No.	Description
UB10-UV-110V	110V AC Undervoltage Trip
UB10-UV-230V	230V AC Undervoltage Trip

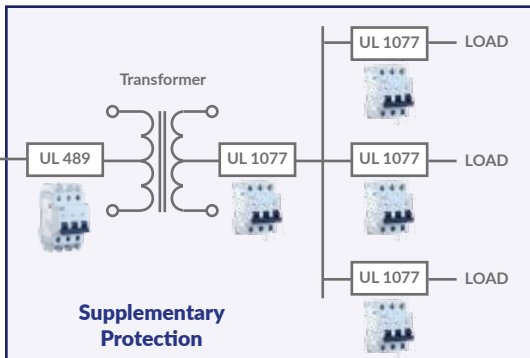
UL 489 & UL1077 Contacts



Part No.	Description
UB10-AC11	Aux. Contact 1P CO
UB10-AL11	Alarm Contact

UL 1077 Miniature Circuit Breakers

Designed for protection of electrical installations against overload and short circuits, this high performing range of DIN rail mountable MCBs have been manufactured in accordance with UL 1077.



- Available from 0.5 Amps to 63 Amps
- Thermo-magnetic overcurrent protection
- 10kA short circuit protection
- RoHS compliant
- B, C & D Type tripping curves
- Contact position indicator

Providing limited overcurrent protection, UL 1077 MCBs are mainly used within specific applications such as appliances and light systems. Different from the branch protecting UL 489 MCB, the UL 1077 MCB's overcurrent protection is *in addition* to the protection provided in the required branch circuit, by the branch circuit overcurrent protective device. By using UL 1077 MCBs, in case of fault, the part of the circuit affected by the fault will be isolated from the rest of the system, thereby giving greater protection for the entire system. UL1077 MCBs are designed to be used in conjunction with UL 489 MCBs. UL1077 MCBs cannot be used as a branch protection device.

10kA MCB **UL 1077 C Curve 1 Pole**



Manufactured in accordance with UL 1077
UL File No.: E495935



Part No.	Description
US10C100.5A	10kA MCB UL 1077 1 pole 0.5A C Curve
US10C1001A	10kA MCB UL 1077 1 pole 1A C Curve
US10C101.6A	10kA MCB UL 1077 1 pole 1.6A C Curve
US10C1002A	10kA MCB UL 1077 1 pole 2A C Curve
US10C1003A	10kA MCB UL 1077 1 pole 3A C Curve
US10C1004A	10kA MCB UL 1077 1 pole 4A C Curve
US10C1005A	10kA MCB UL 1077 1 pole 5A C Curve
US10C1006A	10kA MCB UL 1077 1 pole 6A C Curve
US10C1007A	10kA MCB UL 1077 1 pole 7A C Curve
US10C1008A	10kA MCB UL 1077 1 pole 8A C Curve
US10C1010A	10kA MCB UL 1077 1 pole 10A C Curve
US10C1013A	10kA MCB UL 1077 1 pole 13A C Curve
US10C1015A	10kA MCB UL 1077 1 pole 15A C Curve
US10C1016A	10kA MCB UL 1077 1 pole 16A C Curve
US10C1020A	10kA MCB UL 1077 1 pole 20A C Curve
US10C1025A	10kA MCB UL 1077 1 pole 25A C Curve
US10C1030A	10kA MCB UL 1077 1 pole 30A C Curve
US10C1032A	10kA MCB UL 1077 1 pole 32A C Curve
US10C1040A	10kA MCB UL 1077 1 pole 40A C Curve
US10C1050A	10kA MCB UL 1077 1 pole 50A C Curve
US10C1060A	10kA MCB UL 1077 1 pole 60A C Curve
US10C1063A	10kA MCB UL 1077 1 pole 63A C Curve

10kA MCB **UL 1077 C Curve 2 Pole**



Manufactured in accordance with UL 1077
UL File No.: E495935



Part No.	Description
US10C200.5A	10kA MCB UL 1077 2 pole 0.5A C Curve
US10C2001A	10kA MCB UL 1077 2 pole 1A C Curve
US10C201.6A	10kA MCB UL 1077 2 pole 1.6A C Curve
US10C2002A	10kA MCB UL 1077 2 pole 2A C Curve
US10C2003A	10kA MCB UL 1077 2 pole 3A C Curve
US10C2004A	10kA MCB UL 1077 2 pole 4A C Curve
US10C2005A	10kA MCB UL 1077 2 pole 5A C Curve
US10C2006A	10kA MCB UL 1077 2 pole 6A C Curve
US10C2007A	10kA MCB UL 1077 2 pole 7A C Curve
US10C2008A	10kA MCB UL 1077 2 pole 8A C Curve
US10C2010A	10kA MCB UL 1077 2 pole 10A C Curve
US10C2013A	10kA MCB UL 1077 2 pole 13A C Curve
US10C2015A	10kA MCB UL 1077 2 pole 15A C Curve
US10C2016A	10kA MCB UL 1077 2 pole 16A C Curve
US10C2020A	10kA MCB UL 1077 2 pole 20A C Curve
US10C2025A	10kA MCB UL 1077 2 pole 25A C Curve
US10C2030A	10kA MCB UL 1077 2 pole 30A C Curve
US10C2032A	10kA MCB UL 1077 2 pole 32A C Curve
US10C2040A	10kA MCB UL 1077 2 pole 40A C Curve
US10C2050A	10kA MCB UL 1077 2 pole 50A C Curve
US10C2060A	10kA MCB UL 1077 2 pole 60A C Curve
US10C2063A	10kA MCB UL 1077 2 pole 63A C Curve

10kA MCB **UL 1077 C Curve 3 Pole**



Manufactured in accordance with UL 1077
UL File No.: E495935



Part No.	Description
US10C300.5A	10kA MCB UL 1077 3 pole 0.5A C Curve
US10C3001A	10kA MCB UL 1077 3 pole 1A C Curve
US10C301.6A	10kA MCB UL 1077 3 pole 1.6A C Curve
US10C3002A	10kA MCB UL 1077 3 pole 2A C Curve
US10C3003A	10kA MCB UL 1077 3 pole 3A C Curve
US10C3004A	10kA MCB UL 1077 3 pole 4A C Curve
US10C3005A	10kA MCB UL 1077 3 pole 5A C Curve
US10C3006A	10kA MCB UL 1077 3 pole 6A C Curve
US10C3007A	10kA MCB UL 1077 3 pole 7A C Curve
US10C3008A	10kA MCB UL 1077 3 pole 8A C Curve
US10C3010A	10kA MCB UL 1077 3 pole 10A C Curve
US10C3013A	10kA MCB UL 1077 3 pole 13A C Curve
US10C3015A	10kA MCB UL 1077 3 pole 15A C Curve
US10C3016A	10kA MCB UL 1077 3 pole 16A C Curve
US10C3020A	10kA MCB UL 1077 3 pole 20A C Curve
US10C3025A	10kA MCB UL 1077 3 pole 25A C Curve
US10C3030A	10kA MCB UL 1077 3 pole 30A C Curve
US10C3032A	10kA MCB UL 1077 3 pole 32A C Curve
US10C3040A	10kA MCB UL 1077 3 pole 40A C Curve
US10C3050A	10kA MCB UL 1077 3 pole 50A C Curve
US10C3060A	10kA MCB UL 1077 3 pole 60A C Curve
US10C3063A	10kA MCB UL 1077 3 pole 63A C Curve

UL 489 & UL1077 80A Busbars

Part No.	Description
BUB1P80-12	1P, 12 Pins Busbar
BUB1P80-18	1P, 18 Pins Busbar
BUB1P80-36	1P, 36 Pins Busbar
BUB1P80-57	1P, 57 Pins Busbar

NOTE:
80A UL Approved Busbars are also available in 2 Pole. Replace "1P" with "2P". eg. BUB2P80-12

UL 489 & UL1077 100A Busbars

Part No.	Description
BUB2P100-12	2P, 12 Pins Busbar
BUB2P100-18	1P, 18 Pins Busbar
BUB2P100-56	1P, 57 Pins Busbar

NOTE:
100A UL Approved Busbars are also available in 3 Pole. Replace "2P" with "3P". eg. BUB3P100-12

Busbar Accessories

Part No.	Description
BUBA-1	Busbar Input Terminal for 1P, 2P & 3P Busbars
BUBA-3	3 Pole Busbar Input Terminal
BUBECAP	End Cap for UL Approved Busbar
BUBISPCAP-FL	Protective Cap for UL Approved Busbar
UBLO	Protective Lock

IMO PRODUCT CATALOGUE

DIN Rail Terminals & Accessories

Screw Clamp Terminals



Available Colors
(Beige as Standard)



Part No.	Description
ER2.5	2.5mm ² 750V 24 Amp (Pack size 100pcs)
ER4	4mm ² 750V 32 Amp (Pack size 100pcs*)
ER6	6mm ² 630V 41 Amp (Pack size 100pcs*)
ER10	10mm ² 630V 57 Amp (Pack size 100pcs)
ER16	16mm ² 750V 76 Amp (Pack size 50pcs)
ER16P	16mm ² 750V 76 Amp (Pack size 50pcs)
ER25P	25mm ² 750V 101 Amp (Pack size 50pcs)
ER35P	35mm ² 750V 125 Amp (Pack size 50pcs)

* Pack size quantities will change as old stock is replenished as follows:-
ER4 new pack size: 80pcs ER6 new pack size: 60pcs

NOTE:

When ordering, please specify the Color required, i.e. ER2.5BLUE.
ER16P, 25P & 35P can be used on either standard DIN Rail or G-Rail.



G-Rail profile

Screw Clamp Earth Terminals



Green/Yellow
Marble Only



Part No.	Description
ERPE2.5P	2.5mm ² (Pack size 50pcs)
ERPE2.5/4	4mm ² (Pack size 50pcs)
ERPE6/10	6mm ² (Pack size 25pcs)
ERPE16P	16mm ² (Pack size 25pcs)
ERPE35P	35mm ² (Pack size 1pc)

Screw Clamp High-Insulation Terminals



Available Colors
(Beige as Standard)



Part No.	Description
ER50	50mm ² 1000V 150 Amp (Pack size 25pcs)
ER70	70mm ² 1000V 192 Amp (Pack size 10pcs)
ER95	95mm ² 1000V 232 Amp (Pack size 6pcs)
ER150	150mm ² 1000V 309 Amp (Pack size 4pcs)
ER240	240mm ² 1000V 415 Amp (Pack size 4pcs)

**For a complete range of DIN Rail Terminals & Terminal Accessories,
including Busbars, Terminal Strips and Clamping Yokes,
refer to www.imoautomation.com
or contact IMO for more information and pricing.**

Screw Clamp High-Current Terminals



Available Colors
(Beige as Standard)

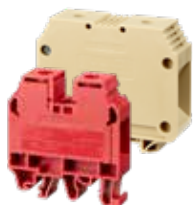


Part No.	Description
ERB95	95mm ² 1000V 232 Amp (Pack size 4pcs)
ERB150	150mm ² 1000V 309 Amp (Pack size 4pcs)
ERB240	240mm ² 1000V 415 Amp (Pack size 4pcs)

NOTE:

All DIN Rail Terminals listed are supplied in pack sizes of 100 pieces

PV Rated Screw Clamp Terminals



1000V Rated up to 175A
Specifically for use in
Solar Applications



Part No.	Description
ER16PV	16mm ² 1000V 85 Amp (Pack size 50pcs)
ER35PV	35mm ² 1000V 115 Amp (Pack size 40pcs)
ER50PV	50mm ² 1000V 150 Amp (Pack size 25pcs)
ER70PV	70mm ² 1000V 175 Amp (Pack size 25pcs)

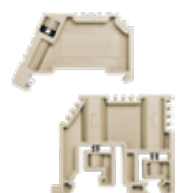
Screw Clamp High-Current Accessories



Part No.	Description
IC95	Isolation Cover for ERB95 (Pack of 4)
IC150	Isolation Cover for ERB150 (Pack of 4)
IC240	Isolation Cover for ERB240 (Pack of 4)
CCB95/2*	Cross Connector for ERB95 2-Way (Pack of 5)
CCB150/2*	Cross Connector for ERB150 2-Way (Pack of 5)
CCB240/2*	Cross Connector for ERB240 2-Way (Pack of 5)

* Available in 2-Way, 3-Way and 4-Way e.g. CCB95/4

End Brackets



Supplied in Beige As Standard
(Other Colors Available)
Sold in Pack of 100 Pieces
(ES6 Sold in Pack of 50 Pieces)



Part No.	Description
ES1	Screw Type for MR35 Rail (Beige)
ES3	Screw Type for MR32 & MR35 Rail (Beige)
ES4	Screwless Type for MR35 Rail (Beige)
ES6	Screw Type for MR35 Rail (Beige)

End Plates



Supplied in Beige As Standard
(Other Colors Available)
Sold in Pack of 100 Pieces
(EP50 Sold in Pack of 10 Pieces)



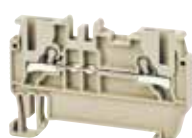
Part No.	Description
EP2.5-10	Polyamide 66 For Use With ER2.5 - ER10
EP16	Polyamide 66 For Use With ER16
EP25P	Polyamide 66 For Use With ER25P
EP50	Polyamide 66 For Use With ER50 - ER240

DIN Rail



Part No.	Description
DINRAIL1M-UNSLLOT	1m Unslotted Electrolytic Zinc Coated
DINRAIL2M-UNSLLOT	2m Unslotted Electrolytic Zinc Coated
DINRAIL1MG-SLOT	1m Slotted Galvanized
DINRAIL2MG-SLOT	2m Slotted Galvanized

Push Fit Terminals



Available Colors
(Beige as Standard)



Part No.	Description
PF1.5	1.5mm ² 800V 17.5 Amp (Pack size 100pcs)
PF2.5	2.5mm ² 800V 24 Amp (Pack size 100pcs)
PF4	4mm ² 800V 32 Amp (Pack size 100pcs*)
PF6	6mm ² 800V 41 Amp (Pack size 100pcs*)
PF10	10mm ² 800V 57 Amp (Pack size 50pcs)

* Pack size quantities will change as old stock is replenished as follows:-
PF4 new pack size: 80pcs PF6 new pack size: 60pcs

NOTE:

When ordering, please specify the Color required. i.e. PF2.5BLUE



PUSH FIT: On average, the IMO Push Fit terminal offers up to 75% saving on wiring time when compared to a screw clamp connection.

Push Fit Earth Terminals



Green/Yellow
Marble Only



Part No.	Description
PFPE1.5P	1.5mm ² (Pack size 80pcs)
PFPE2.5P	2.5mm ² (Pack size 50pcs)
PFPE4P	4mm ² (Pack size 50pcs)
PFPE6P	6mm ² (Pack size 60pcs)
PFPE10P	10mm ² (Pack size 25pcs)

Push Fit Fuse Terminals



Available Colors
(Beige as Standard)



Part No.	Description
PFF4LD520-24VDC	4mm ² 24VDC 10 Amp (Pack size 15pcs)
PFF4LD520-220VAC	4mm ² 220V 10 Amp (Pack size 15pcs)
PFF4LD525-24VDC	4mm ² 24VDC 10 Amp (Pack size 15pcs)
PFF4LD525-220VAC	4mm ² 220V 10 Amp (Pack size 15pcs)
PFF3	4mm ² 500V 10 Amp (Pack size 15pcs)
PFF3LD-24VDC	4mm ² 24VDC 10 Amp (Pack size 15pcs)
PFF3LD-220VAC	4mm ² 220V 10 Amp (Pack size 15pcs)

Push Fit Double Deck Terminals



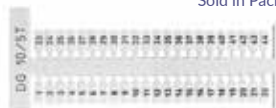
Available Colors
(Beige as Standard)



Part No.	Description
PFD2.5	2.5mm ² 500V 24 Amp (Pack size 40pcs)
PFD2.5V	2.5mm ² 500V 24 Amp (Pack size 40pcs)
PFD4	4mm ² 500V 32 Amp (Pack size 25pcs)

MT5 Marking Tags

MT5 markers can be used with the whole DIN Terminal range.
Sold in Pack of 500 Pieces



Part No.	Description
MT5	Unprinted Tags 5x5mm
MT5-1-50	Pre-Printed Tags 1-50 5x5mm
MT5-51-100	Pre-Printed Tags 51-100 5x5mm

For all DIN Rail Terminal marking options and solutions including our Thermal Marker Printer, please visit www.imopc.com.

Warning Labels & Group Marking



Sold in Pack of 25 Pieces
(GMBEIGE Sold in Pack of 50 Pieces)

Part No.	Description
WL1	Warning Label With Symbol (Yellow)
WL2	Warning Label Without Symbol (Yellow)
WL3	Warning Label With Symbol (White)
GMBEIGE	Tag Carrier For ER Range 1xWhite Label
GM2	Tag Carrier For ER Range 4xMT5 Markers

Cross Connections



Available in 2, 3, 4 & 10 Configurations
Sold in Pack of 5 Pieces



Part No.	Description
CC2.5/10*	For Use With ER2.5
CC4/10*	For Use With ER4
CC6/10*	For Use With ER6
CC10/10*	For Use With ER10
CC16/10*	For Use With ER16, ER16P & ER25
CC35/10*	For Use With ER35
CCS1.5/10*	For Use With PF1.5
CCS2.5/10*	For Use With PF2.5
CCS4/10*	For Use With PF4
CCS6/10*	For Use With PF6
CCS10/10*	For Use With PF10

* Available in 2, 3, 4 & 10 configurations

NOTE: Prices quoted are based on 10 configuration and can be broken down into virtually any configuration.

IMO PRODUCT CATALOGUE

Single & Three Phase Industrial Power Supplies

IMOs range of industrial Power Supplies have all been engineered to deliver reliable, high quality DC power to a control panel or automation system with the introduction of a range of compact switching power supplies with universal AC and DC voltage inputs, short circuit protection, and a range of output DC voltage options.

These power supplies operate at high efficiencies, making them an exceptionally reliable power source for components such as Programmable Logic Controllers (PLC), sensors, relays, contactors, timers, temperature controllers, process controllers and HMIs, all of which are available from IMO and all benefit from our 3-year warranty.

- Universal input voltage
- Single & Three Phase versions available
- Short circuit protection
- Selection of metal & plastic bodies
- UL Approved
- 3 Year Warranty as standard



LPS-1 Single Phase PSU

NEW



High Performance PSU
85-264VAC
or 120-370VDC



Part No.	Description
<i>Plastic Body</i>	
LPS-1-010-24DC	0.42 Amp 10W 24VDC
LPS-1-024-24DC	1 Amp 24W 24VDC
LPS-1-030-5DC	6 Amp 30W 5VDC
LPS-1-040-12DC	3.33 Amp 40W 12VDC
LPS-1-040-24DC	1.7 Amp 40W 24VDC
LPS-1-060-12DC	5 Amp 60W 12VDC
LPS-1-060-24DC	2.5 Amp 60W 24VDC
LPS-1-090-12DC	7.5 Amp 90W 12VDC
<i>Metal Body</i>	
LPS-1-120-12DC	10 Amp 120W 12VDC
LPS-1-120-24DC	5 Amp 120W 24VDC
LPS-1-120-48DC	2.5 Amp 120W 48VDC
LPS-1-240-24DC	10 Amp 240W 24VDC
LPS-1-240-48DC	5 Amp 240W 48VDC
LPS-1-480-24DC	20 Amp 480W 24VDC

LPS-3 Three Phase PSU

NEW



High Performance PSU
340-550VAC
or 480-780VDC



Part No.	Description
<i>Metal Body</i>	
LPS-3-240-24DC	10 Amp 240W 24VDC
LPS-3-480-24DC	20 Amp 480W 24VDC

HPS-1 Single Phase PSU

NEW



Peak Performance PSU
90-264VAC
or 127-375VDC



Part No.	Description
<i>Metal Body</i>	
HPS-1-120-12DC	10 Amp 120W (180W for 3 sec) 12VDC
HPS-1-120-24DC	5 Amp 120W (180W for 3 sec) 24VDC
HPS-1-120-48DC	2.5 Amp 120W (180W for 3 sec) 48VDC
HPS-1-240-24DC	10 Amp 240W (360W for 3 sec) 24VDC
HPS-1-240-48DC	5 Amp 240W (360W for 3 sec) 48VDC
HPS-1-480-24DC	20 Amp 480W (720W for 3 sec) 24VDC

BPS-1 Single Phase PSU



Slimline PSU
90-264VAC
or 127-370VDC



Part No.	Description
<i>Plastic Body</i>	
BPS-1-15-12DC	1.2 Amp 15W 12VDC
BPS-1-30-12DC	2.5 Amp 30W 12VDC
BPS-1-15-24DC	0.65 Amp 15W 24VDC
BPS-1-30-24DC	1.3 Amp 30W 24VDC
<i>Metal Body</i>	
BPS-1-60-12DC	5 Amp 60W 12VDC
BPS-1-100-12DC	8 Amp 100W 12VDC
BPS-1-70-24DC	3 Amp 70W 24VDC
BPS-1-120-24DC	5 Amp 120W 24VDC
BPS-1-180-24DC	7.5 Amp 180W 24VDC
BPS-1-240-24DC	10 Amp 240W 24VDC
BPS-1-480-24DC	20 Amp 480W 24VDC

SPS-1 Single Phase PSU

NEW



Modular PSU
85-264VAC
or 120-370VDC



Part No.	Description
<i>Plastic Body</i>	
SPS-1-012-5DC	2.4 Amp 12W 5VDC
SPS-1-015-12DC	1.25 Amp 15W 12VDC
SPS-1-015-24DC	0.63 Amp 15W 24VDC
SPS-1-024-12DC	2 Amp 24W 12VDC
SPS-1-030-24DC	1.25 Amp 30W 24VDC
SPS-1-060-24DC	2.5 Amp 60W 24VDC
SPS-1-092-24DC	3.83 Amp 92W 24VDC
SPS-1-150-24DC	6.25 Amps 150W (230VAC) / 5.3 Amps 127.4W (115VAC) 24VDC

AC Disconnects

IMO Disconnects are suited to a huge range of applications. Regular switching requirements are more than adequately handled by our proven "Standard" 3 or 4 pole devices, while dedicated designs are available for switching DC loads, PV applications and Battery Banks - see our Solar TRUE DC Disconnects.

IMO offers a comprehensive range of high-quality AC Disconnects with switching capabilities ranging from 20A to 125A, both in 3 and 4 Poles. Within the range, there are a No. of different mounting types including Panel Mount, , Base Mount, DIN Rail Mount and Enclosed, plus there are a range of handles and extendable shafts to suit most applications, as well as other accessories to compliment the range. The handles can be locked in the OFF position for peace of mind when maintenance is taking place.

- On Load 10-125A (AC21) on 3 & 4 Pole AC Disconnects
- Up to 3 padlock positions for enhanced safety
- Range includes various mounting options and accessories
- Selection of Changeover Switches available
- UL Approved



PE69 3 Pole Enclosed AC Disconnects



IP66 Red/Yellow
3 Padlock Positions
Auxiliary Contact Available



Part No.	Description
PE69-3020	3 Pole 20 Amp (AC21) 16 Amp (AC23)
PE69-3025	3 Pole 25 Amp (AC21) 20 Amp (AC23)
PE69-3032	3 Pole 32 Amp (AC21) 25 Amp (AC23)
PE69-3040	3 Pole 40 Amp (AC21) 32 Amp (AC23)
PE69-3063	3 Pole 63 Amp (AC21) 45 Amp (AC23)
PE69-3080	3 Pole 80 Amp (AC21) 45 Amp (AC23)
PE69-30100	3 Pole 100 Amp (AC21) 72 Amp (AC23)
PE69-30125	3 Pole 125 Amp (AC21) 85 Amp (AC23)

PE69 4 Pole Enclosed AC Disconnects



IP66 Red/Yellow
3 Padlock Positions
Auxiliary Contact Available



Part No.	Description
PE69-4020	4 Pole 20 Amp (AC21) 16 Amp (AC23)
PE69-4025	4 Pole 25 Amp (AC21) 20 Amp (AC23)
PE69-4032	4 Pole 32 Amp (AC21) 25 Amp (AC23)
PE69-4040	4 Pole 40 Amp (AC21) 32 Amp (AC23)
PE69-4063	4 Pole 63 Amp (AC21) 45 Amp (AC23)
PE69-4080	4 Pole 80 Amp (AC21) 45 Amp (AC23)
PE69-40100	4 Pole 100 Amp (AC21) 72 Amp (AC23)
PE69-40125	4 Pole 125 Amp (AC21) 85 Amp (AC23)

PE69 L 3 Pole Enclosed AC Disconnects



Longer Body with extra wiring space

IP66 Red/Yellow
3 Padlock Positions
Auxiliary Contact Available



Part No.	Description
PE69-3020L	3 Pole 20 Amp (AC21) 16 Amp (AC23)
PE69-3025L	3 Pole 25 Amp (AC21) 20 Amp (AC23)
PE69-3032L	3 Pole 32 Amp (AC21) 25 Amp (AC23)
PE69-3040L	3 Pole 40 Amp (AC21) 32 Amp (AC23)

PE69 L 4 Pole Enclosed AC Disconnects



Longer Body with extra wiring space

IP66 Red/Yellow
3 Padlock Positions
Auxiliary Contact Available



Part No.	Description
PE69-4020L	4 Pole 20 Amp (AC21) 16 Amp (AC23)
PE69-4025L	4 Pole 25 Amp (AC21) 20 Amp (AC23)
PE69-4032L	4 Pole 32 Amp (AC21) 25 Amp (AC23)
PE69-4040L	4 Pole 40 Amp (AC21) 32 Amp (AC23)

PE69 6 Pole Enclosed AC Disconnects



IP66 Red/Yellow Handle
3 Padlock Positions
Auxiliary Contact Available



Part No.	Description
PE69-6020	6 Pole 20 Amp (AC21) 16 Amp (AC23)
PE69-6025	6 Pole 25 Amp (AC21) 20 Amp (AC23)
PE69-6032	6 Pole 32 Amp (AC21) 25 Amp (AC23)
PE69-6040	6 Pole 40 Amp (AC21) 32 Amp (AC23)
PE69-6063	6 Pole 63 Amp (AC21) 45 Amp (AC23)
PE69-6080	6 Pole 80 Amp (AC21) 45 Amp (AC23)

PE69 8 Pole Enclosed AC Disconnects



IP66 Red/Yellow Handle
3 Padlock Positions
Auxiliary Contact Available



Part No.	Description
PE69-8020	8 Pole 20 Amp (AC21) 16 Amp (AC23)
PE69-8025	8 Pole 25 Amp (AC21) 20 Amp (AC23)
PE69-8032	8 Pole 32 Amp (AC21) 25 Amp (AC23)
PE69-8040	8 Pole 40 Amp (AC21) 32 Amp (AC23)
PE69-8063	8 Pole 63 Amp (AC21) 45 Amp (AC23)
PE69-8080	8 Pole 80 Amp (AC21) 45 Amp (AC23)

IMO PRODUCT CATALOGUE

PM69 3 Pole Panel Mount AC Disconnects



Red/Yellow or Black Handle
1 or 3 Padlock Positions



Part No.	Description
PM69-3020-B64	3 Pole 20 Amp Black Handle 64x64mm
PM69-3020-RY48	3 Pole 20 Amp R/Y Handle 48x48mm
PM69-3020-RY64	3 Pole 20 Amp R/Y Handle 64x64mm
PM69-3025-RY64	3 Pole 25 Amp R/Y Handle 64x64mm
PM69-3032-RY64	3 Pole 32 Amp R/Y Handle 64x64mm
PM69-3040-RY64	3 Pole 40 Amp R/Y Handle 64x64mm
PM69-3063-RY64	3 Pole 63 Amp R/Y Handle 64x64mm
PM69-3080-RY64	3 Pole 80 Amp R/Y Handle 64x64mm
PM69-30100-RY64	3 Pole 100 Amp R/Y Handle 64x64mm
PM69-30125-RY64	3 Pole 125 Amp R/Y Handle 64x64mm

PM69 4 Pole Panel Mount AC Disconnects



Red/Yellow or Black Handle
1 or 3 Padlock Positions



Part No.	Description
PM69-4020-RY64	4 Pole 20 Amp R/Y Handle 64x64mm
PM69-4032-RY48	4 Pole 32 Amp R/Y Handle 48x48mm
PM69-4040-RY64	4 Pole 40 Amp R/Y Handle 64x64mm
PM69-4063-RY64	4 Pole 63 Amp R/Y Handle 64x64mm
PM69-4080-RY64	4 Pole 80 Amp R/Y Handle 64x64mm
PM69-40100-RY64	4 Pole 100 Amp R/Y Handle 64x64mm

DM69 Direct Mount AC Disconnects



Red/Yellow Handle
1 Padlock Position
To Suit Distribution Boxes



Part No.	Description
DM69-3020-RY48	3 Pole 20 Amp (AC21) 48x48mm Handle
DM69-3032-RY48	3 Pole 32 Amp (AC21) 48x48mm Handle
DM69-3063-RY48	3 Pole 63 Amp (AC21) 48x48mm Handle
DM69-4032-RY48	4 Pole 32 Amp (AC21) 48x48mm Handle
DM69-4063-RY48	4 Pole 63 Amp (AC21) 48x48mm Handle
DM69-8032-RY48	8 Pole 32 Amp (AC21) 48x48mm Handle

LB69 3 Pole Base Mount AC Disconnects



Selection of Handles Available
with 1 or 3 Padlock Positions



Part No.	Description
LB69-3020	3 Pole 20 Amp (AC21) 16 Amp (AC23)
LB69-3025	3 Pole 25 Amp (AC21) 20 Amp (AC23)
LB69-3032	3 Pole 32 Amp (AC21) 25 Amp (AC23)
LB69-3040	3 Pole 40 Amp (AC21) 32 Amp (AC23)
LB69-3063	3 Pole 63 Amp (AC21) 45 Amp (AC23)
LB69-3080	3 Pole 80 Amp (AC21) 45 Amp (AC23)

LB69 4 Pole Base Mount AC Disconnects



Selection of Handles Available
with 1 or 3 Padlock Positions



Part No.	Description
LB69-4020	4 Pole 20 Amp (AC21) 16 Amp (AC23)
LB69-4025	4 Pole 25 Amp (AC21) 20 Amp (AC23)
LB69-4032	4 Pole 32 Amp (AC21) 25 Amp (AC23)
LB69-4040	4 Pole 40 Amp (AC21) 32 Amp (AC23)
LB69-4063	4 Pole 63 Amp (AC21) 45 Amp (AC23)
LB69-4080	4 Pole 80 Amp (AC21) 45 Amp (AC23)

NOTE:
6 Pole and 8 Pole versions are available upon request.

AC Disconnects Accessories



Part No.	Description
H69-0001	Red/Yellow Handle 64x64mm
H69-0001-B	Black Handle 64x64mm
H69-0003	Red/Yellow Handle 48x48mm
H69-0004	Black Handle 48x48mm
J7049	Door Handle Mounting Tool
E69-0001	Extension Shaft 100mm
E69-0002	Extension Shaft 200mm
E69-0003	Extension Shaft 300mm
E69-0004	Extension Shaft 400mm
A69-0001	Aux. Contacts 1NO+1NC
A69-0002	Aux. Contacts 2NO

CO69 Changeover Switches



IP65
Red/Yellow
High Visibility Handles



Part No.	Description
CO69-3020	3 Pole 20 Amp (AC21 @ 690V)
CO69-3025	3 Pole 25 Amp (AC21 @ 690V)
CO69-3032	3 Pole 32 Amp (AC21 @ 690V)
CO69-3040	3 Pole 40 Amp (AC21 @ 690V)
CO69-3063	3 Pole 63 Amp (AC21 @ 690V)
CO69-4020	4 Pole 20 Amp (AC21 @ 690V)
CO69-4025	4 Pole 25 Amp (AC21 @ 690V)
CO69-4032	4 Pole 32 Amp (AC21 @ 690V)
CO69-4040	4 Pole 40 Amp (AC21 @ 690V)
CO69-4063	4 Pole 63 Amp (AC21 @ 690V)

TRUE DC Solar Disconnects

In solar installations, the DC disconnect is like a vehicle air-bag. You never know it really works until you need it. So it's good to know that the IMO SI has now surpassed 8 million installed units without a single recorded failure.

This isn't surprising considering the product carries all the most important approvals including UL508i, TUV (IEC 60947-1 & IEC 60947-3), CE and CCC. In fact, the IMO SI solar disconnect has been tested by some of the most rigorous examiners and OEM manufacturers in the world, passing with flying colors every single time.

As ever, the SI range has a guaranteed arc suppression time of under 5mS, in built arc cooling chambers, operator independent switching mechanism and Safe-Lock handle, making it one of the safest DC disconnects available, no matter who uses it or how slowly they operate it.

- Market Leading Design
- 8 Million Installed Units Worldwide
- ZERO Reported Electrical Failures
- UL Approved



Enclosed **TRUE DC** Disconnect with Rotary Actuator Switch - Lockable OFF



- Rotary Actuator Switch
- Lockable OFF with Safe-Lock ©
- Self-Extinguishing Plastic Enclosure
- M25 Cable Gland Entry Option
- NEMA Type 4X
- IP67 Rated



Part No.	UL Ratings UL508i				Poles in series	No. of Strings	Contact Configuration
	350V	500V	600V	1000V			
SI16-PEL64R-2	16A	16A	16A	-	2	1	
SI25-PEL64R-2	25A	25A	25A	-	2	1	
SI32-PEL64R-2	32A	32A	32A	-	2	1	
SI40-PEL64R-2	48A	48A	48A	16A	2	1	
SI55-PEL64R-2	55A	55A	55A	20A	2	1	
SI65-PEL64R-2	65A	65A	65A	25A	2	1	
SI16-PEL64R-4	16A	16A	16A	-	2	2	
SI25-PEL64R-4	25A	25A	25A	-	2	2	
SI32-PEL64R-4	32A	32A	32A	-	2	2	
SI40-PEL64R-4	48A	48A	48A	16A	2	2	
SI55-PEL64R-4	55A	55A	55A	20A	2	2	
SI65-PEL64R-4	65A	65A	65A	25A	2	2	
SI16-PEL64R-4S	16A	16A	16A	-	4	1	
SI25-PEL64R-4S	25A	25A	25A	-	4	1	
SI32-PEL64R-4S	32A	32A	32A	-	4	1	
SI40-PEL64R-4S	48A	48A	40A	40A	4	1	
SI55-PEL64R-4S	55A	55A	55A	55A	4	1	
SI65-PEL64R-4S	55A	55A	55A	55A	4	1	

IMO PRODUCT CATALOGUE

TRUE DC Disconnect with Lever Actuator Switch for Distribution Boards - Lockable OFF



- Lever Actuator Switch
- Lockable OFF with Safe-Lock ©
- For Distribution Boards
- Low Height Handle also available
- NEMA Type 1 Handle
- IP40 Body



Part No.	UL Ratings UL508i				Poles in series	No. of Strings	Contact Configuration
	350V	500V	600V	1000V			
SI16-DBL-2	16A	16A	16A	-	2	1	
SI25-DBL-2	25A	25A	25A	-	2	1	
SI32-DBL-2	32A	32A	32A	-	2	1	
SI40-DBL-2	48A	48A	48A	16A	2	1	
SI55-DBL-2	55A	55A	55A	20A	2	1	
SI65-DBL-2	65A	65A	65A	25A	2	1	
SI16-DBL-4	16A	16A	16A	-	2	2	
SI25-DBL-4	25A	25A	25A	-	2	2	
SI32-DBL-4	32A	32A	32A	-	2	2	
SI40-DBL-4	48A	48A	48A	16A	2	2	
SI55-DBL-4	55A	55A	55A	20A	2	2	
SI65-DBL-4	65A	65A	65A	25A	2	2	
SI16-DBL-4S	16A	16A	16A	-	4	1	
SI25-DBL-4S	25A	25A	25A	-	4	1	
SI32-DBL-4S	32A	32A	32A	-	4	1	
SI40-DBL-4S	48A	48A	40A	40A	4	1	
SI55-DBL-4S	55A	55A	55A	55A	4	1	
SI65-DBL-4S	55A	55A	55A	55A	4	1	

ASA Plastic Distribution Boxes

Screw Clamp Terminals



High Thermal Stability
Transparent Door
Earth & Neutral Bars Included
Suitable for PV Applications



Part No.	Description
E-04W	4 Way IP65 (201 x 128 x 120mm)
E-06W	6 Way IP65 (201 x 165 x 120mm)
E-08W	8 Way IP65 (201 x 202 x 120mm)
E-12W	12 Way IP65 (259 x 319 x 144mm)
E-24W	24 Way IP65 (384 x 319 x 144mm)
E-36W	36 Way IP65 (534 x 319 x 144mm)
E-48W	48 Way IP65 (664 x 319 x 141mm)
E-BLANK	10 Way Blanking Plate for Distribution Boxes

NOTE:

The image above is for illustrative purposes only, and does not come supplied as standard with the disconnect as shown.



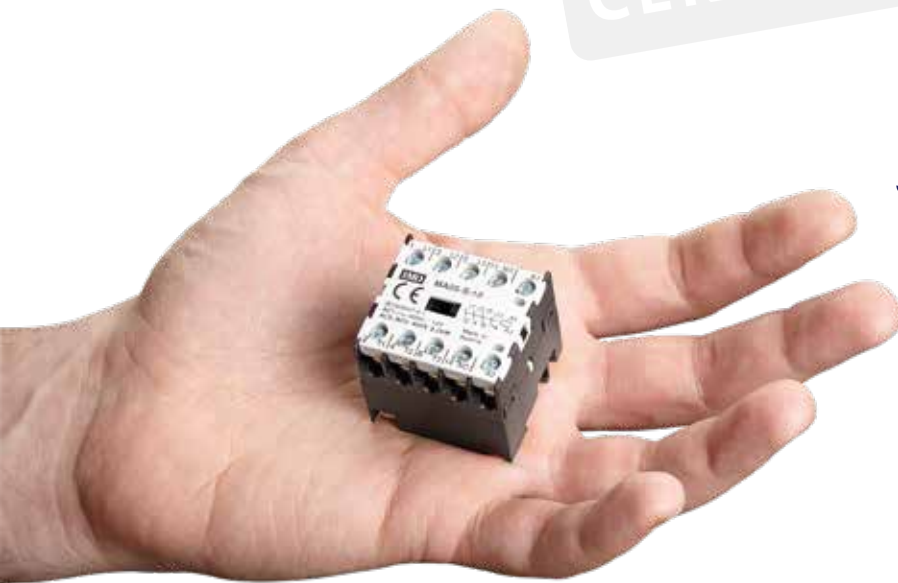
For the complete range of
Solar Products,
go to www.imoautomation.com
and download the catalogue

Contactors, Thermal Overload Relays, Contact Blocks & Accessories

IMO offers a comprehensive range of high-quality Contactors, suited to a range of applications. Regular switching requirements are more than adequately handled by our proven "Standard" 3 or 4 pole devices, while dedicated designs are available for switching DC loads (PV applications, Capacitor / Battery banks) and low current loads (LED lighting, Vehicles etc.). Our ground-breaking Mini and Micro Contactors offer the same feature-driven benefits as the Standard range, with a smaller footprint to facilitate miniaturisation.

All of our Contactors are partnered with a full range of accessories and options to add functionality and flexibility to your design. Isn't it time you made the Switch to IMO Contactors?

- Full Range From Micro to Mega Contactors
- International Approvals (EN/IEC, cULus, etc.)
- Cutting-Edge Designs Including Miniaturized
- Full Range of Accessories & Options Including PCB Mounting



MA05 Micro Contactor

Probably the smallest
in the world



(Actual Size)



2.2kW 5A AC3 Micro Contactor



3 Pole Open
TS15 DIN Rail mountable
Ultra small dimensions



Part No.	Description
MA05-S-01110AC	12A AC1 Aux. 1NC 110VAC coil
MA05-S-0124AC	12A AC1 Aux. 1NC 24VAC coil
MA05-S-10110AC	12A AC1 Aux. 1NO 110VAC coil
MA05-S-10230AC	12A AC1 Aux. 1NO 230VAC coil
MA05-S-0124DC	12A AC1 Aux. 1NC 24VDC coil
MA05-S-1024DC	12A AC1 Aux. 1NO 24VDC coil

NOTE:

Other variations available including Reversing Pair & PCB Mount.

4kW 9A AC3 Mini Contactor



3 Poles Open
Screw terminals option
Solder pins option
Fast on tab connection option



Part No.	Description
MB09-F-00230	4kW 9A AC3 Fast On 230VAC coil
MB09-P-10=24	4kW 9A AC3 1NO Aux, PCB 24VDC coil
MB09-S-0040230*	4kW 9A AC3 230VAC coil
MB09-S-01230	4kW 9A AC3 1NC Aux, 230VAC coil**
MB09-S-01=24	4kW 9A AC3 1NC Aux, 24VDC coil**
MB09-S-10110	4kW 9A AC3 1NO Aux, 110VAC coil**
MB09-S-10230	4kW 9A AC3 1NO Aux, 230VAC coil**
MB09-S-1024	4kW 9A AC3 1NO Aux, 24VAC coil**
MB09-S-10400	4kW 9A AC3 1NO Aux, 400VAC coil**
MB09-S-10=24	4kW 9A AC3 1NO Aux, 24VDC coil**
Reversing Pair	
MB09-R-S-0124	4kW 9A AC3 1NC Aux, 24VAC coil

* 4 Poles open

** Overload = U12/16E...K1

5.5kW 12A AC3 Mini Contactor



Screw Terminals Option
Solder Pins Option
Fast On Tab Connection Option
3 Poles Open



Part No.	Description
MB12-S-01=24	5.5kW 12A AC3, 1NC Aux, 24VDC coil*
MB12-S-10110	5.5kW 12A AC3, 1NO Aux, 110VAC coil*
MB12-S-10230	5.5kW 12A AC3, 1NO Aux, 230VAC coil*
MB12-S-1024	5.5kW 12A AC3, 1NO Aux, 24VAC coil*
MB12-S-10=24	5.5kW 12A AC3, 1NO Aux, 24VDC coil*

* Overload = U12/16E...K1

IMO PRODUCT CATALOGUE

4kW 10A AC3 Contactor



Coil connection top & bottom
Bifurcated aux. contacts
Easy coil swap



Part No.	Description
4 Poles Open	
MC10N-S-00-40110AC	4kW 10A AC3, 110VAC coil*
MC10N-S-00-40230AC	4kW 10A AC3, 230VAC coil*
MC10N-S-00-4024AC	4kW 10A AC3, 24VAC coil*
4 Poles (2NO/2NC)	
MC10N-S-00-2224AC	4kW 10A AC3, 24VAC coil*
MC10N-S-00-2224DC	4kW 10A AC3, 24VDC coil*
MC10N-S-00-22110AC	4kW 10A AC3, 110VAC coil*
MC10N-S-00-22180AC	4kW 10A AC3, 180VAC coil*
MC10N-S-00-22230AC	4kW 10A AC3, 230VAC coil*
4 Poles Closed	
MC10N-S-00-04230AC	4kW 10A AC3, 230VAC coil*
MC10N0-S-00-04400AC	4kW 10A AC3, 400VAC coil*
4 Poles (3NO/1NC)	
MC10N-S-0031110AC	4kW 10A AC3, 110VAC coil*
3 Poles Open (1NC Aux.)	
MC10N-S-01110AC	4kW 10A AC3, 110VAC coil*
MC10N-S-01230AC	4kW 10A AC3, 230VAC coil*
MC10N-S-0124AC	4kW 10A AC3, 24VAC coil*
MC10N-S-0124DC	4kW 10A AC3, 24VDC coil*
MC10N-S-01400AC	4kW 10A AC3, 400VAC coil*
3 Poles Open (1NO Aux.)	
MC10N-S-10110AC	4kW 10A AC3, 110VAC coil*
MC10N-S-10230AC	4kW 10A AC3, 230VAC coil*
MC10N-S-1024AC	4kW 10A AC3, 24VAC coil*
MC10N-S-1024DC	4kW 10A AC3, 24VDC coil*
MC10N-S-10400AC	4kW 10A AC3, 400VAC coil*

* Overload = MCOR-1...

5.5kW 14A AC3 Contactor



Coil connection top & bottom
Bifurcated aux. contacts
Easy coil swap



Part No.	Description
4 Poles Open	
MC14N-S-00-4024AC	5.5kW 14A AC3, 24VAC coil*
MC14N-S-00-40230AC	5.5kW 14A AC3, 230VAC coil*
4 Poles (2NO/2NC)	
MC14N-S-00-22230AC	5.5kW 14A AC3, 230VAC coil*
4 Poles Closed	
MC14N-S-00-04400AC	5.5kW 14A AC3, 400VAC coil*
3 Poles Open (1NC Aux.)	
MC14N-S-01110AC	5.5kW 14A AC3, 110VAC coil*
MC14N-S-01230AC	5.5kW 14A AC3, 230VAC coil*
MC14N-S-0124AC	5.5kW 14A AC3, 24VAC coil*
MC14N-S-0124DC	5.5kW 14A AC3, 24VDC coil*
3 Poles Open (1NO Aux.)	
MC14N-S-10110AC	5.5kW 14A AC3, 110VAC coil*
MC14N-S-10230AC	5.5kW 14A AC3, 230VAC coil*
MC14N-S-1024AC	5.5kW 14A AC3, 24VAC coil*
MC14N-S-1024DC	5.5kW 14A AC3, 24VDC coil*
MC14N-S-10400AC	5.5kW 14A AC3, 400VAC coil*

* Overload = MCOR-1...

7.5kW 18A AC3 Contactor



Coil connection top & bottom
Bifurcated aux. contacts
Easy coil swap



Part No.	Description
4 Poles Open	
MC18N-S-00-40110AC	7.5kW 18A AC3, 110VAC coil*
MC18N-S-00-40230AC	7.5kW 18A AC3, 230VAC coil*
MC18N-S-00-4024AC	7.5kW 18A AC3, 24VAC coil*
MC18N-S-00-4024DC	7.5kW 18A AC3, 24VDC coil*
MC18N-S-00-40400AC	7.5kW 18A AC3, 400VAC coil*
4 Poles (2NO/2NC)	
MC18N-S-00-22110AC	7.5kW 18A AC3, 110VAC coil*
MC18N-S-00-22230AC	7.5kW 18A AC3, 230VAC coil*
4 Poles Closed	
MC18N-S-00-0424DC	7.5kW 18A AC3, 24VDC coil*
MC18N-S-00-04110AC	7.5kW 18A AC3, 110VAC coil*
3 Poles Open (1NC Aux.)	
MC18N-S-01110AC	7.5kW 18A AC3, 110VAC coil*
MC18N-S-01230AC	7.5kW 18A AC3, 230VAC coil*
MC18N-S-0124AC	7.5kW 18A AC3, 24VAC coil*
MC18N-S-0124DC	7.5kW 18A AC3, 24VDC coil*
MC18N-S-01400AC	7.5kW 18A AC3, 400VAC coil*
3 Poles Open (1NO Aux.)	
MC18N-S-10110AC	7.5kW 18A AC3, 110VAC coil*
MC18N-S-10230AC	7.5kW 18A AC3, 230VAC coil*
MC18N-S-1024AC	7.5kW 18A AC3, 24VAC coil*
MC18N-S-1024DC	7.5kW 18A AC3, 24VDC coil*
MC18N-S-10400AC	7.5Kw 18A AC3, 400VAC coil*

* Overload = MCOR-1...

11kW 22A AC3 Contactor



Coil connection top & bottom
Bifurcated aux. contacts
Easy coil swap



Part No.	Description
4 Poles Open	
MC22N-S-00-40110AC	11kW 22A AC3, 110VAC coil*
MC22N-S-00-40230AC	11kW 22A AC3, 230VAC coil*
MC22N-S-00-4024AC	11kW 22A AC3, 24VAC coil*
MC22N-S-00-4024DC	11kW 22A AC3, 24VDC coil*
MC22N-S-00-40400AC	11kW 22A AC3, 400VAC coil*
3 Poles Open (1NC Aux.)	
MC22N-S-01230AC	11kW 22A AC3, 230VAC coil*
3 Poles Open (1NO Aux.)	
MC22N-S-10110AC	11kW 22A AC3, 110VAC coil*
MC22N-S-10230AC	11kW 22A AC3, 230VAC coil*
MC22N-S-1024AC	11kW 22A AC3, 24VAC coil*
MC22N-S-1024DC	11kW 22A AC3, 24VDC coil*
MC22N-S-10400AC	11kW 22A AC3, 400VAC coil*

* Overload = MCOR-1...

11kW 24A AC3 Contactor



Coil connection top & bottom
Bifurcated aux. contacts
Easy coil swap



Part No.	Description
4 Poles Open	
MC24N-S-00-4024AC	11kW 24A AC3, 24VAC coil*
MC24N-S-00-4024DC	11kW 24A AC3, 24VDC coil*
MC24N-S-00-40230AC	11kW 24A AC3, 230VAC coil*
MC24N-S-00-40400AC	11kW 24A AC3, 400VAC coil*
4 Poles (2NO/2NC)	
MC24N-S-00-2224AC	11kW 24A AC3, 24VAC coil
MC24N-S-00-2224DC	11kW 24A AC3, 24VDC coil
MC24N-S-00-22230AC	11kW 24A AC3, 230VAC coil
MC24N-S-00-22400AC	11kW 24A AC3, 400VAC coil
4 Poles Closed	
MC24N-S-00-0424AC	11kW 24A AC3, 24VAC coil*
MC24N-S-00-0424DC	11kW 24A AC3, 24VDC coil*
MC24N-S-00-04230AC	11kW 24A AC3, 230VAC coil*
MC24N-S-00-04400AC	11kW 24A AC3, 400VAC coil*
3 Poles Open	
MC24-S-00110	11kW 24A AC3, 110VAC coil*
MC24-S-00230	11kW 24A AC3, 230VAC coil*
MC24-S-0024	11kW 24A AC3, 24VAC coil*
MC24-S-00400	11kW 24A AC3, 400VAC coil*
MC24-S-00=24	11kW 24A AC3, 24VDC coil*

* Overload = MCOR-2...

15kW 32A AC3 Contactor



Coil connection top & bottom
Bifurcated aux. contacts
Easy coil swap



Part No.	Description
4 Poles Open	
MC32N-S-00-4024AC	15kW 32A AC3, 24VAC coil*
MC32N-S-00-4024DC	15kW 32A AC3, 24VDC coil*
MC32N-S-00-40230AC	15kW 32A AC3, 230VAC coil*
MC32N-S-00-40400AC	15kW 32A AC3, 400VAC coil*
4 Poles (2NO/2NC)	
MC32N-S-00-2224AC	15kW 32A AC3, 24VAC coil
MC32N-S-00-2224DC	15kW 32A AC3, 24VDC coil
MC32N-S-00-22230AC	15kW 32A AC3, 230VAC coil
MC32N-S-00-22400AC	15kW 32A AC3, 400VAC coil
4 Poles Closed	
MC32N-S-00-0424AC	15kW 32A AC3, 24VAC coil*
MC32N-S-00-0424DC	15kW 32A AC3, 24VDC coil*
MC32N-S-00-04230AC	15kW 32A AC3, 230VAC coil*
MC32N-S-00-04400AC	15kW 32A AC3, 400VAC coil*
3 Poles Open	
MC32-S-00110	15kW 32A AC3, 110VAC coil*
MC32-S-00230	15kW 32A AC3, 230VAC coil*
MC32-S-0024	15kW 32A AC3, 24VAC coil*
MC32-S-00400	15kW 32A AC3, 400VAC coil*
MC32-S-00=24	15kW 32A AC3, 24VDC coil*

* Overload = MCOR-2...

18.5kW 40A AC3 Contactor



Coil connection top & bottom
Bifurcated aux. contacts
Easy coil swap



Part No.	Description
4 Poles Open	
MC40N-S-00-4024AC	18.5kW 40A AC3, 24VAC coil*
MC40N-S-00-4024DC	18.5kW 40A AC3, 24VDC coil*
MC40N-S-00-40230AC	18.5kW 40A AC3, 230VAC coil*
MC40N-S-00-40400AC	18.5kW 40A AC3, 400VAC coil*
4 Poles (2NO/2NC)	
MC40N-S-00-2224AC	18.5kW 40A AC3, 24VAC coil
MC40N-S-00-2224DC	18.5kW 40A AC3, 24VDC coil
MC40N-S-00-22230AC	18.5kW 40A AC3, 230VAC coil
MC40N-S-00-22400AC	18.5kW 40A AC3, 400VAC coil
4 Poles Closed	
MC40N-S-00-0424AC	18.5kW 40A AC3, 24VAC coil*
MC40N-S-00-0424DC	18.5kW 40A AC3, 24VDC coil*
MC40N-S-00-04230AC	18.5kW 40A AC3, 230VAC coil*
MC40N-S-00-04400AC	18.5kW 40A AC3, 400VAC coil*
3 Poles Open	
MC40-S-00110	18.5kW 40A AC3, 110VAC coil*
MC40-S-00230	18.5kW 40A AC3, 230VAC coil*
MC40-S-0024	18.5kW 40A AC3, 24VAC coil*
MC40-S-00400	18.5kW 40A AC3, 400VAC coil*
MC40-S-00=24	18.5kW 40A AC3, 24VDC coil*

* Overload = MCOR-2...

22kW 50A AC3 Contactor



Coil connection top & bottom
Bifurcated aux. contacts
Easy coil swap



Part No.	Description
4 Poles Open	
MC50N-S-00-4024AC	22kW 50A AC3, 24VAC coil*
MC50N-S-00-4024DC	22kW 50A AC3, 24VDC coil*
MC50N-S-00-40110AC	22kW 50A AC3, 110VAC coil*
MC50N-S-00-40230AC	22kW 50A AC3, 230VAC coil*
MC50N-S-00-40400AC	22kW 50A AC3, 400VAC coil*
3 Poles Open	
MC50-S-00110	22kW 50A AC3, 110VAC coil*
MC50-S-00230	22kW 50A AC3, 230VAC coil*
MC50-S-0024	22kW 50A AC3, 24VAC coil*
MC50-S-00=24	22kW 50A AC3, 24VDC coil*

* Overload = MCOR-3...

30kW 62A AC3 Contactor



Coil connection top & bottom
Bifurcated aux. contacts
Easy coil swap



Part No.	Description
4 Poles Open	
MC62N-S-00-4024AC	30kW 62A AC3, 24VAC coil*
MC62N-S-00-4024DC	30kW 62A AC3, 24VDC coil*
MC62N-S-00-40230AC	30kW 62A AC3, 230VAC coil*
MC62N-S-00-40400AC	30kW 62A AC3, 400VAC coil*
3 Poles Open	
MC62-S-00110	30kW 62A AC3, 110VAC coil*
MC62-S-00230	30kW 62A AC3, 230VAC coil*
MC62-S-0024	30kW 62A AC3, 24VAC coil*
MC62-S-00400	30kW 62A AC3, 400VAC coil*
MC62-S-00=24	30kW 62A AC3, 24VDC coil*

* Overload = MCOR-3...

37kW 74A AC3 Contactor



Coil connection top & bottom
Bifurcated aux. contacts
Easy coil swap



Part No.	Description
4 Poles Open	
MC74N-S-00-4024AC	37kW 74A AC3, 24VAC coil*
MC74N-S-00-4024DC	37kW 74A AC3, 24VDC coil*
MC74N-S-00-40230AC	37kW 74A AC3, 230VAC coil*
MC74N-S-00-40400AC	37kW 74A AC3, 400VAC coil*
3 Poles Open	
MC74-S-00110	37kW 74A AC3, 110VAC coil*
MC74-S-00230	37kW 74A AC3, 230VAC coil*
MC74-S-00400	37kW 74A AC3, 400VAC coil*

* Overload = MCOR-3...

IMO PRODUCT CATALOGUE

45kW 90A AC3 Contactor



3 Poles Open
Coil connection top & bottom
Bifurcated aux. contacts
Easy coil swap



Part No.	Description
MC90-S-00110	45kW 90A AC3, 110-120V 110VAC coil*
MC90-S-00230	45kW 90A AC3, 220-240V 220VDC coil*

* Overload = MCOR-4...

55kW 115A AC3 Contactor



3 Poles Open
Coil connection top & bottom
Bifurcated aux. contacts
Easy coil swap



Part No.	Description
MC115-S-00110	55kW 115A AC3, 110-120V 110VAC coil*
MC115-S-00230	55kW 115A AC3, 220-240V 230VDC coil*

* Overload = MCOR-4...

Capacitor Switching Contactors



For Reactive or Non-Reactive
Capacitor Banks



Part No.	Description
MC18N-K-10400AC	12.5kVar 1NO Aux. 400VAC coil
MC32-K-00110	25kVar 110VAC coil
MC32-K-00230	25kVar 230VAC coil
MC32-K-00400	25kVar 400VAC coil
MC50-K-00400	33.3kVar 400VAC coil
MC62-K-00110	50kVar 110VAC coil
MC62-K-00230	50kVar 230VAC coil
MC62-K-00400	50kVar 400VAC coil
MC74-K-00230	75kVar 230VAC coil
MC74-K-00400	75kVar 400VAC coil
MC115-K-00230	100kVar 230VAC coil 50/60Hz

AC3 DC Operated Contactor



Low Power Consumption
3W Inrush-Sealed



Part No.	Description
4 Poles Open	
MCD10-S-00-4024DC	4kW 10A 24VDC coil
3 Poles Open	
MCD10-S-10=24	4kW 10A 1NO Aux, 24VDC coil
MCD14-S-10=24	5.5kW 14A 1NO Aux, 24VDC coil
MCD18-S-10=24	7.5kW 18A 1NO Aux, 24VDC coil
MCD22-S-10=24	11kW 22A 1NO Aux, 24VDC coil
MCD32-S-00=24	15kW 24VDC coil
MCD40-S-00=24	18.5kW 24VDC coil

Accessories



Part No.	Description
MA-P1039	MA Snap-on Adaptor for 35mm DIN Rail
MCNW-VB10	Reversing Starter Connector for MCN10/18
MCY-C-40	Star Delta Load Circuit Connection Links MC24-40
U12SM-MC	DIN Rail Mounting Kit for U12/16E...-MC Overloads
U3/32SM	Overload Terminal Set for MCOR-1-... Overloads
U3/42G	DIN Mounting Bracket for MCOR-2
Y9A415	Timer for Star-Delta Starters 1-20s 110-415VAC
Y9A60	Timer for Star-Delta Starters 1-20s 24-60VAC

Contact Blocks & Interlocks



Part No.	Description
MBA-11	Aux. Contact Block for MB Contactors 1NO/1NC
MBA-22	Aux. Contact Block for MB09 / 12... 2NO/2NC
MCA01	Aux. Contact Block for MC10 to 115 1NC Top Mount
MCA01U	Aux. Contact Block for MC10 to 115 1NC Late Break
MCA10	Aux. Contact Block for MC10 to 115 1NO Top Mount
MCA10U	Aux. Contact Block for MC10 to 115 1NO Late Break
MCAA11	Aux. Contact Block for MC151 to 316 1NO/1NC Side
MCAH01	High Switching Capacity 25A AC1 1NC Top Mount
MCAH10	High Switching Capacity 25A AC1 1NO Top Mount
MCAS-11	Aux. Contact Block for MC24 to 115 1NO/1NC Side
MC-I-W	Interlock for MC(D)10 to MC(D)40 Contactors
MC-I-X	Interlock for MC50 to MC74 Contactors
MC-I-Y	Interlock for MC90 & MC115 Contactor

Thermal Overload Relays for MC



Part No.	Description
U12/16E0.9-MC	Man.Reset for MC10 to MC22 0.6-0.9Amps
U12/16E1.2-MC	Man.Reset for MC10 to MC22 0.8-1.2Amps
U12/16E1.8-MC	Man.Reset for MC10 to MC22 1.2-1.8Amps
U12/16E2.7-MC	Man.Reset for MC10 to MC22 1.8-2.7Amps
U12/16E4-MC	Man.Reset for MC10 to MC22 2.7-4Amps
U12/16E6-MC	Man.Reset for MC10 to MC22 4-6Amps
U12/16E9-MC	Man.Reset for MC10 to MC22 6-9Amps
U12/16E11-MC	Man.Reset for MC10 to MC22 8-11Amps
U12/16E14-MC	Man.Reset for MC10 to MC22 10-14Amps
U12/16E18-MC	Man.Reset for MC10 to MC22 13-18Amps
U12/16E23-MC	Man.Reset for MC10 to MC22 17-23Amps
U12/16E30-MC	Man.Reset for MC10 to MC22 22-30Amps
MCOR-1-0.18	Overload for MC10 to MC22 0.12-0.18Amps
MCOR-1-0.27	Overload for MC10 to MC22 0.18-0.27Amps
MCOR-1-0.4	Overload for MC10 to MC22 0.27-0.4Amps
MCOR-1-0.6	Overload for MC10 to MC22 0.4-0.6Amps
MCOR-1-0.9	Overload for MC10 to MC22 0.6-0.9Amps
MCOR-1-1.2	Overload for MC10 to MC22 0.8-1.2Amps
MCOR-1-1.8	Overload for MC10 to MC22 1.2-1.8Amps
MCOR-1-2.7	Overload for MC10 to MC22 1.8-2.7Amps
MCOR-1-4	Overload for MC10 to MC22 2.7-4Amps
MCOR-1-6	Overload for MC10 to MC22 4-6Amps
MCOR-1-9	Overload for MC10 to MC22 6-9Amps
MCOR-1-11	Overload for MC10 to MC22 8-11Amps
MCOR-1-14	Overload for MC10 to MC22 10-14Amps
MCOR-1-18	Overload for MC10 to MC22 13-18Amps
MCOR-1-24	Overload for MC10 to MC22 17-24Amps
MCOR-1-32	Overload for MC10 to MC22 23-32Amps
MCOR-2-14	Overload for MC24 to MC40 10-14Amps
MCOR-2-20	Overload for MC24 to MC40 14-20Amps
MCOR-2-28	Overload for MC24 to MC40 20-28Amps
MCOR-2-42	Overload for MC24 to MC40 28-42Amps
MCOR-3-28	Overload for MC50 to MC74 20-28Amps
MCOR-3-42	Overload for MC50 to MC74 28-42Amps
MCOR-3-52	Overload for MC50 to MC74 40-52Amps
MCOR-3-65	Overload for MC50 to MC74 52-65Amps
MCOR-3-74	Overload for MC50 to MC74 60-74Amps
MCOR-4-120	Overload for MC90 to MC115 80-120Amps

Thermal Overload Relays for MB09



Part No.	Description
U12/16E0.4K1	Overload for MB09 0.27-0.4Amps
U12/16E0.9K1	Overload for MB09 0.6-0.9Amps
U12/16E1.2K1	Overload for MB09 0.8-1.2Amps
U12/16E1.8K1	Overload for MB09 1.2-1.8Amps
U12/16E2.7K1	Overload for MB09 1.8-2.7Amps
U12/16E4K1	Overload for MB09 2.7-4Amps
U12/16E6K1	Overload for MB09 4-6Amps
U12/16E9K1	Overload for MB09 6-9Amps
U12/16E11K1	Overload for MB09 8-11Amps
U12/16E14K1	Overload for MB09 10-14Amps



**Manufacturing high quality industrial automation
& control components since 1972**

IMO PRODUCT CATALOGUE

Modular Heating & Lighting Contactors

20A AC1 AC Coil Modular Contactor



Single Module
Available in Standard &
Hum-Free Versions



Part No.	Description
Standard Modular Contactor	
HC20-02230	2 Pole NC 230V
HC20-0224	2 Pole NC 24V
HC20-20230	2 Pole NO 230V
HC20-2024	2 Pole NO 24V
HC20-11230	1 Pole NO + 1 Pole NC 230V
Hum-Free Modular Contactor	
HC20-02230VS	Hum-Free 2 Pole NC 230V
HC20-0224VS	Hum-Free 2 Pole NC 24V
HC20-20230VS	Hum-Free 2 Pole NO 230V
HC20-2024VS	Hum-Free 2 Pole NO 24V
HC20-10230VS	Hum-Free 1 Pole NO 230V
HC20-11230VS	Hum-Free 1 Pole NO + 1 Pole NC 230V
HC20-1024VS	Hum-Free 1 Pole NO 24V
HC20-1124VS	Hum-Free 1 Pole NO + 1 Pole NC 24V

NEW

25A AC1 AC Coil Modular Contactor



Double Module
Available in Standard &
Hum-Free Versions



Part No.	Description
Standard Modular Contactor	
HC25-04230	4 Pole NC 230V
HC25-0424	4 Pole NC 24V
HC25-40230	4 Pole NO 230V
HC25-4024	4 Pole NO 24V
Hum-Free Modular Contactor	
HC25-0224VS	Hum-Free 2 Pole NC 24V
HC25-2024VS	Hum-Free 2 Pole NO 24V
HC25-02230VS	Hum-Free 2 Pole NC 230V
HC25-20230VS	Hum-Free 2 Pole NO 230V
HC25-1124VS	Hum-Free 1 Pole NO + 1 Pole NC 24V
HC25-11230VS	Hum-Free 1 Pole NO + 1 Pole NC 230V
HC25-1324VS	Hum-Free 1 Pole NO + 3 Pole NC 24V
HC25-13230VS	Hum-Free 1 Pole NO + 3 Pole NC 230V
HC25-31230VS	Hum-Free 3 Pole NO + 1 Pole NC 230V
HC25-3124VS	Hum-Free 3 Pole NO + 1 Pole NC 24V
HC25-2224VS	Hum-Free 2 Pole NO + 2 Pole NC 24V
HC25-22230VS	Hum-Free 2 Pole NO + 2 Pole NC 230V
HC25-0424VS	Hum-Free 4 Pole NC 24V
HC25-4024VS	Hum-Free 4 Pole NO 24V
HC25-40230VS	Hum-Free 4 Pole NO 230V

NEW

NOTE:
Other variations of NO & NC Poles available.

40A AC1 AC Coil Modular Contactor



Triple Module



Part No.	Description
Standard Modular Contactor	
HC40-04230	4 Pole NC 230V
HC40-40230	4 Pole NO 230V
HC40-22230	2 Pole NO + 2 Pole NC 230V
HC40-20230	2 Pole NO 230V

NOTE:
Other variations of NO & NC Poles available.

63A AC1 AC Coil Modular Contactor



Triple Module



Part No.	Description
Standard Modular Contactor	
HC63-40230	4 Pole NO 230V
HC63-20230	2 Pole NO 230V

NOTE:
Other variations of NO & NC Poles available.

**For a complete range of Modular Heating & Lighting Contactor
Accessories including Auxiliary Contact Blocks,
Spacers, RC Units and Sealing Covers
refer to www.imoautomation.com
or contact IMO for more information and pricing.**

Motor Circuit Breakers C4

IMO's C4 range of Motor Circuit Breakers are tailor-made for effective protection of 3-phase motors against overcurrents and short circuits while minimising false tripping. The range offers a selection of features to maximise protection while reducing unnecessary down-time. Based on combined thermal / electro-magnetic technologies, overcurrent protection can be precisely set to the required current draw, while the electromagnetically activated short circuit protection is preset at 13x the nominal current, avoiding false trips at startup due to current inrush.

Inbuilt phase failure protection provides additional protection from overheating and resultant damage, while an extensive range of accessories includes undervoltage or shunt trip modules, signalling and alarm contacts and installation products such as busbar, combination mounting kits and door-interlock adaptors. All devices may be mounted on 35mm DIN rail, or in the case of C4/100 types, 75mm DIN rail. Operating handles are padlockable for isolation purposes and units may be equipped with other safety features such as covers for the current setting scale and additional insulation barriers for higher voltage applications.

- Specifically designed for protecting motors from overcurrents (0.1-100A) and short circuits
- Ultimate breaking capacity of up to 100kA, protecting against any likely short circuit fault
- Wide range of add-on accessories for additional functionality and ease of installation
- Approval certifications including cULus listing to UL508

C4/32R with Rotary Switch



Manufactured in accordance with
IEC 60947-1,
IEC 60947-2 &
IEC 60947-4-1



Part No.	Description
C4/32R-0.16	Setting Range 0.1-0.16A IRC* 2.1A
C4/32R-0.25	Setting Range 0.16-0.25A IRC* 3.3A
C4/32R-0.4	Setting Range 0.25-0.4A IRC* 5.2A
C4/32R-0.63	Setting Range 0.4-0.63A IRC* 8.2A
C4/32R-1	Setting Range 0.63-1.0A IRC* 13A
C4/32R-1.6	Setting Range 1.0-1.6A IRC* 20.8A
C4/32R-2.5	Setting Range 1.6-2.5A IRC* 32.5A
C4/32R-4	Setting Range 2.5-4.0A IRC* 52A
C4/32R-6	Setting Range 4.0-6.0A IRC* 78A
C4/32R-8	Setting Range 5.0-8.0A IRC* 104A
C4/32R-10	Setting Range 6.0-10.0A IRC* 130A
C4/32R-13	Setting Range 9.0-13.0A IRC* 169A
C4/32R-17	Setting Range 11.0-17.0A IRC* 221A
C4/32R-22	Setting Range 14.0-22.0A IRC* 286A
C4/32R-26	Setting Range 18.0-26.0A IRC* 338A
C4/32R-32	Setting Range 22.0-32.0A IRC* 416A

* IRC = Instantaneous Release Current

C4/63R & 100R with Rotary Switch



Manufactured in accordance with
IEC 60947-1,
IEC 60947-2 &
IEC 60947-4-1



Part No.	Description
C4/63R-40	Setting Range 28.0-40.0A IRC* 520A
C4/63R-50	Setting Range 34.0-50.0A IRC* 650A
C4/63R-63	Setting Range 45.0-63.0A IRC* 819A
C4/100R-63	Setting Range 45.0-63.0A IRC* 819A
C4/100R-75	Setting Range 55.0-75.0A IRC* 975A
C4/100R-90	Setting Range 70.0-90.0A IRC* 1170A
C4/100R-100	Setting Range 80.0-100.0A IRC* 1300A

* IRC = Instantaneous Release Current

NOTE: C4/63R models do not need a line side isolator, however C4/100R models do require a line side isolator

Motor Circuit Breaker Accessories



Part No.	Description
C432S2	3 Phase Busbar Fork Type 63A 2 Way
C432S3	3 Phase Busbar Fork Type 63A 3 Way
C432S4	3 Phase Busbar Fork Type 63A 4 Way
C432S5	3 Phase Busbar Fork Type 63A 5 Way
C432VK1	Link Module Connect to MB Contactor
C432VK3	Link Module Connect to MC10 Contactor
C4HS11	Aux Contact Block Side Mount 1NO+1NC
C4HQ11	Aux Contact Block Top Mount 1NO+1NC
C432RE	C4 Terminal Block

Motor Circuit Breaker



Link Module



MC Contactor



How to...

Build Your Own UL 508 Combination Motor Controller

Parts Needed	
C4/32...	Select: Motor Circuit Breaker (0.16A to 100A)
MB or MC Contactor	Select either: MB Miniature Contactor or MC Standard Contactor
Link Module	Select either: C432VK1 for MB Contactors or C432VK3 for MC Contactors
C4HQ11	Auxiliary Contact Block, Top Mount 1NO+1NC
C432RE	C4 Terminal Block

IMO PRODUCT CATALOGUE

Pilot Lights & Pushbuttons

Designed and manufactured in Western Europe, IMO's comprehensive high quality range of modular 22mm push buttons and controls provide a flexible, reliable system for operating low voltage electrical systems. Encompassing a myriad of switching options from momentary push and e-stops to multi-position captive key switches and the ability to mix, match and stack contact blocks, they offer the ultimate level of flexibility and customisation.

Additional accessories including switch illumination options, actuator engraving, collars, legend plates, protective shrouds and pre-drilled enclosures add a smart, professional look and additional functionality to the range. Environmental protection up to IP67 is available with most parts, making them suitable for both interior and exterior use.

Featuring the latest optoelectronic technology, IMO's range of high quality 22mm monoblock LED pilot lights provide bright, reliable, long-lasting illumination and indication for control panels and machinery, whilst maintaining an IP65 protection rating.

- Modular Design for Ultimate Flexibility
- High Quality, Robust, Reliable Construction
- UL Approved

Illuminated Buttons



Part No.	Description
B3DLRED	Red Spring Return Aluminium Bezel IP67
B3DLGREEN	Green Spring Return Aluminium Bezel IP67
B3DLYELLOW	Yellow Spring Return Aluminium Bezel IP67
B3DLBLUE	Blue Spring Return Aluminium Bezel IP67
BS3KL2	2 Position Rotary Knob Black Bezel IP67
BS3DT-GRE/RED	Double Actuation Green/Red Black Bezel IP65
BC3DT-GRE/RED	Double Actuation Green/Red Chrome Bezel IP65
B3DT-GRE/RED	Double Actuation Green/Red Aluminium Bezel IP65

Push Buttons



Part No.	Description
BS3P14RED-O	Mushroom Head Push Button 40mm Red with White "O"
BS3DBLA-ARROW	Black with White Arrow Spring Return Black Bezel
B3DBLACK	Black Spring Return Aluminium Bezel
BS3DBLACK	Black Spring Return Black Bezel
B3DBLUE	Blue Spring Return Aluminium Bezel
BS3DBLUE	Blue Spring Return Black Bezel
BS3DGRE-I	Green Spring Return White/Black Bezel
BS3DGREEN	Green Spring Return Black Bezel
BS3DRED	Red Spring Return Black Bezel
B3DRED	Red Spring Return Aluminium Bezel
B3P1RED	28mm Red Spring Return Aluminium Bezel
BS3DYELLOW	Yellow Spring Return Black Bezel

Rotary Knobs



Part No.	Description
B3KN2	2 Position Maintained 60° Aluminium Bezel
BC3KN2	2 Position Maintained 60° Chrome Bezel
BS3KN2	2 Position Maintained 60° Black Bezel
B3KN3	3 Position Maintained 60° Aluminium Bezel
BS3KN3	3 Position Maintained 60° Black Bezel
BS3KN9	2 Position Maintained 120° Black Bezel
BS3KN10	2 Position Maintained 90° Black Bezel
B3SAR0	Key Operated 2 Position Maintained 60° Aluminium Bezel Removable In OFF
B3SAR1	Key Operated 2 Position Maintained 60° Aluminium Bezel Removable In ON
B3SAR01	Key Operated 2 Position Maintained 60° Aluminium Bezel Removable In OFF & ON
B3SAT0	Key Operated 2 Position Spring Return 60° Aluminium Bezel Removable In OFF
B3SAR00	Key Operated 3 Position Maintained 60° Aluminium Bezel Removable In OFF
B3SARR102	Key Operated 3 Position Maintained 60° Aluminium Bezel Removable In OFF & ON
B3SAT00	Key Operated 3 Position Spring Return 60° Aluminium Bezel Removable In OFF

NOTE:

All Rotary Knobs are available with either Aluminium, Black or Chrome bezels. For different bezel finishes, the part number is affected as follows:-

B3KN2 - Aluminium Bezel
BS3KN2 - Black Bezel
BC3KN2 - Chrome Bezel

Stop Push Buttons



Part No.	Description
BS3P3RED-O	28mm Red with White "O" Twist Release Black Bezel
BC3P34RED-O	40mm Red with White "O" Twist Release Chrome Bezel
BS3P34RED-O	40mm Red with White "O" Twist Release Black Bezel
BS3P45RED	38mm Red Emergency Stop according to EN ISO 13850
BS3P44S3	40mm Red Key Release Emergency Stop according to EN ISO 13850

Contact Blocks



Part No.	Description
B3T01	1NC Clips onto B3S & B3M
B3T10	1NO Clips onto B3S & B3M
B4TU11	1NO & 1NC for BG Enclosures
B4TU10F	1NO with Lamp Holder for BG Enclosures
B4TU10	1NO for BG Enclosures
B4TU02	2NC for BG Enclosures
B4TU20	2NO for BG Enclosures
B3S	Panel Mounting Collar for Pushbuttons & Pilot Lights

How to... SELECT PUSHBUTTON, CONTACTS & MOUNT TYPE

Assembly Snaps Together

PANEL MOUNTING



Choose Your Button



PB06C - Contact Block & Panel Mount Collar

ENCLOSURE MOUNTING



Choose Your Enclosure



Choose Your Contact Block



Choose Your Button

Emergency Stop Stations



Part No.	Description
BG10P45-11	Emergency Stop Station 40mm Red with Yellow Face 1NO and 1NC Contacts IP67
BG10P34-01	Emergency Stop Station 40mm Twist To Release 1NC Contacts IP67
BG10P34-02	Emergency Stop Station 40mm Twist To Release 2NC Contacts IP67
BG10P34P-02	Emergency Stop Station 70mm Red Twist Release Yellow Enclosure Face 2NC Contacts IP67
BG10P34P-11	Emergency Stop Station 70mm Red Twist Release Yellow Enclosure Face 1NO & 1NC Contacts IP67
BG10P44S3-11-SK	Fire Brigade Key Operated 40mm With Yellow Shroud 1NO & 1NC

Push Button Enclosures



Part No.	Description
BG1	Grey Enclosure 1 Hole
BG1YEL	Grey with Yellow Front Enclosure 1 Hole
BG2	Grey Enclosure 2 Holes
BG3	Grey Enclosure 3 Holes

Push Button Accessories



Part No.	Description
B3-SK-YELLOW	Shroud 40mm Max. Button Diameter
J7049	Pushbutton Collar Tightening Tool
B3-7603-2	E Stop Legend Plate
B4-R455	Spare Key
B3S	Push Button Collar for B3T/F Products
B3M	Push Button Panel Mount Collar
B3F	Lamp Holder for Push Buttons

LED & Filament Bulbs



Part No.	Description
B3-L110-GREEN	Green LED Lamp 110V AC
B3-L12-WHITE	White LED Lamp 12V AC
B3-L230-BLUE	Blue LED Lamp 230V AC
B3-L24A-RED	Red LED Lamp 24V AC/DC
LAMP110V	Filament Lamp 110V AC
LAMP12V	Filament Lamp 12V AC

NOTE:
LED lamps are available in a selection of different Colors including Yellow, Red, Blue, Green, Amber and White.

LED Pilot Lights



Part No.	Description
LMB-110-GREEN	Green 110VAC
LMB-110-RED	Red 110VAC
LMB-110-WHITE	White 110VAC
LMB-110-YELLOW	Yellow 110VAC
LMB-230-GREEN	Green 230VAC
LMB-230-RED	Red 230VAC
LMB-230-WHITE	White 230VAC
LMB-230-YELLOW	Yellow 230VAC
LMB-24-BLUE	Blue 24V AC/DC
LMB-24-GREEN	Green 24V AC/DC
LMB-24-RED	Red 24V AC/DC
LMB-24-WHITE	White 24V AC/DC
LMB-24-YELLOW	Yellow 24V AC/DC

Transparent Lens Caps



Part No.	Description
B3RFGREEN	Green Lens Cap Fresnel Lens
B3RFRED	Red Lens Cap Fresnel Lens
B3RGREEN	Green Lens Cap
B3RRRED	Red Lens Cap

IMO PRODUCT CATALOGUE

Direct On Line Motor Starters

IMOs range of Direct-On-Line Starters have all been designed especially for the industrial marketplace. Offering the benefits of IP65 rating, multiple coil voltages, the range of DOL Starters provides multiple choices for motor control. All IMO DOL Starters are CE, UL and cUL approved and already wired to accept a separate overload.

- Multiple Coil Voltages
- Wired to Accept Overload
- IP65 Protection Rating
- UL Approved

How to...

**SELECT THE RIGHT OVERLOAD FROM THE GUIDE
BY EITHER FULL LOAD CURRENT OR HP/kW RATING**

FULL LOAD CURRENT	OVERLOAD CODE
0.6A → 0.9A	U12/16E0.9-MC
0.8A → 1.2A	U12/16E1.2-MC
1.2A → 1.8A	U12/16E1.8-MC
1.8A → 2.7A	U12/16E2.7-MC
2.7A → 4.0A	U12/16E4-MC
4.0A → 6.0A	U12/16E6-MC
6.0A → 9.0A	U12/16E9-MC
8.0A → 11.0A	U12/16E11-MC
10.0A → 14.0A	U12/16E14-MC
13.0A → 18.0A	U12/16E18-MC
17.0A → 23.0A	U12/16E23-MC
22.0A → 30.0A	U12/16E30-MC

HP	1 Phase 220VAC	3 Phase 220VAC	3 Phase 380VAC	3 Phase 415VAC	3 Phase 440VAC	kW
1/8	U12/16E1.8-MC	-	-	-	-	0.09
1/4	U12/16E2.7-MC	U12/16E1.8-MC	U12/16E0.9-MC	U12/16E0.9-MC	U12/16E0.9-MC	0.19
1/2	U12/16E4-MC	U12/16E2.7-MC	U12/16E1.2-MC	U12/16E1.2-MC	U12/16E1.2-MC	0.37
3/4	U12/16E6-MC	U12/16E4-MC	U12/16E1.8-MC	U12/16E1.8-MC	U12/16E1.8-MC	0.56
1	U12/16E9-MC	U12/16E4-MC	U12/16E2.7-MC	U12/16E2.7-MC	U12/16E1.8-MC	0.75
2	U12/16E14-MC	U12/16E9-MC	U12/16E4-MC	U12/16E4-MC	U12/16E4-MC	1.50
3	U12/16E18-MC	U12/16E11-MC	U12/16E6-MC	U12/16E6-MC	U12/16E6-MC	2.20
4	U12/16E23-MC	U12/16E14-MC	U12/16E9-MC	U12/16E9-MC	U12/16E6-MC	3.00
5	U12/16E30-MC	U12/16E14-MC	U12/16E11-MC	U12/16E9-MC	U12/16E9-MC	3.70
5.5	U12/16E30-MC	U12/16E18-MC	U12/16E11-MC	U12/16E9-MC	U12/16E9-MC	4
7.5	-	U12/16E23-MC	U12/16E14-MC	U12/16E14-MC	U12/16E14-MC	5.5
10	-	U12/16E30-MC	U12/16E18-MC	U12/16E18-MC	U12/16E18-MC	7.5
12.5 / 13.5	-	-	U12/16E23-MC	U12/16E23-MC	U12/16E23-MC	9.3 / 10
15	-	-	U12/16E30-MC	U12/16E30-MC	U12/16E23-MC	11

Enclosed DOL Starter IP65



Plastic Enclosure



Part No.	Description
DOL10230*	DOL 4kW 10A Start & Stop 230VAC
DOL10400*	DOL 4kW 10A Start & Stop 400VAC
DOL10110*	DOL 4kW 10A Start & Stop 110VAC
DOL18230*	DOL 7.5kW 18A Start & Stop 230VAC
DOL18400*	DOL 7.5kW 18A Start & Stop 400VAC
DOL18110*	DOL 7.5kW 18A Start & Stop 110VAC
DOL22110*	DOL 11kW 22A Start & Stop 110VAC
DOL22230*	DOL 11kW 22A Start & Stop 230VAC
DOL22400*	DOL 11kW 22A Start & Stop 400VAC

* Overload = U12/16E...-MC

Thermal Overload Relays



Part No.	Description
U12/16E0.9-MC	Man.Reset for DOL Starter 0.6-0.9Amps
U12/16E1.2-MC	Man.Reset for DOL Starter 0.8-1.2Amps
U12/16E1.8-MC	Man.Reset for DOL Starter 1.2-1.8Amps
U12/16E2.7-MC	Man.Reset for DOL Starter 1.8-2.7Amps
U12/16E4-MC	Man.Reset for DOL Starter 2.7-4Amps
U12/16E6-MC	Man.Reset for DOL Starter 4-6Amps
U12/16E9-MC	Man.Reset for DOL Starter 6-9Amps
U12/16E11-MC	Man.Reset for DOL Starter 8-11Amps
U12/16E14-MC	Man.Reset for DOL Starter 10-14Amps
U12/16E18-MC	Man.Reset for DOL Starter 13-18Amps
U12/16E23-MC	Man.Reset for DOL Starter 17-23Amps
U12/16E30-MC	Man.Reset for DOL Starter 22-30Amps

Starter & Relay Enclosures



IP65 Rated



Part No.	Description
P1M	With DIN Rail (89 x 180 x 101mm)
P1MT	With Start & Stop Buttons

Industrial & Slimline Plug-In Relays

A heritage manufacturer, IMO's relay manufacturing goes back as far as 1972, and over the years we have strived to innovate and produce new types of relays for developing technologies. In 1984 we developed the first BT Type 47 Telecom Relay, and again in 1990 we launched the first BABT compliant isolation relay for data transfer, confirming our place as one of the leading global relay manufacturers. Today, our range of Industrial Relays include Signal Relays, Power Relays, Automotive Relays and Solar Relays, and range of compatible sockets.

IMO's range of Industrial Relays are available with either an AC or DC coil, and suitable for PCB mounting or plug-in via a dedicated socket. We also offer a range of slimline DIN Rail mountable relays which are just 6mm thick, and provide substantial space savings in a panel when compared to traditional plug-in type relays.

- Wide Range of Industrial Relays
- Relays Manufacturing Market Leader & Innovator
- UL Approved
- Range of Compatible Sockets Available



HY High Capacity Relays 1PNO



Solder Lug or Plug On
1 Pole NO



Part No.	Description
HY1A112DC	30 Amps 12VDC Coil Resistance 75Ω
HY1A124AC	30 Amps 24VAC Coil Resistance 300Ω
HY1A124DC	30 Amps 24VDC Coil Resistance 300Ω
HY1A1230AC	30 Amps 230VAC Coil Resistance 20800Ω

HY High Capacity Relays 2PNO



Solder Lug or Plug On
2 Pole NO



Part No.	Description
HY2A112DC	25 Amps 12VDC Coil Resistance 75Ω
HY2A124DC	25 Amps 24VDC Coil Resistance 300Ω
HY2A1230AC	25 Amps 230VAC Coil Resistance 20800Ω

HYE Plug-In Relays 2/3/4PCO



Plug-In
2, 3 & 4 Pole Changeover
LED & Manual Test Latch



Part No.	Description
2 Pole Changeover Versions (2PCO)	
HYE21PN120AC	10 Amps 120VAC up to 1.8VA
HYE21PN12DC	10 Amps 12VDC up to 1.1W
HYE21PN240AC	10 Amps 240VAC up to 1.8VA
HYE21PN24AC	10 Amps 24VAC up to 1.8VA
HYE21PN24DC	10 Amps 24VDC up to 1.1W
HYE21XX12DC*	10 Amps 12VDC up to 1.1W
HYE21XX240AC*	10 Amps 240VAC up to 1.8VA
3 Pole Changeover Versions (3PCO)	
HYE31PN230AC	10 Amps 230VAC up to 1.8VA
HYE31PN24AC	10 Amps 24VAC up to 1.8VA
HYE31PN24DC	10 Amps 24VDC up to 1.1W
4 Pole Changeover Versions (4PCO)	
HYE41PN110DC	5 Amps 110VDC up to 1.1W
HYE41PN120AC	5 Amps 120VAC up to 1.8VA
HYE41PN12AC	5 Amps 12VAC up to 1.8VA
HYE41PN12DC	5 Amps 12VDC up to 1.1W
HYE41PN240AC	5 Amps 240VAC up to 1.8VA
HYE41PN24AC	5 Amps 24VAC up to 1.8VA
HYE41PN24DC	5 Amps 24VDC up to 1.1W
HYE41PN48AC	5 Amps 48VAC up to 1.8VA
HYE41PN48DC	5 Amps 48VDC up to 1.1W
HYE41PX12DC**	5 Amps 12VDC up to 1.1W
HYE41PX240AC**	5 Amps 240VAC up to 1.8VA
HYE41PX24DC**	5 Amps 240VDC up to 1.1W
HYE41XX120AC*	5 Amps 120VAC up to 1.8VA
HYE41XX12DC*	5 Amps 12VDC up to 1.1W
HYE41XX240AC*	5 Amps 240VAC up to 1.8VA
HYE41XX24DC*	5 Amps 24VDC up to 1.1W
HYE41XX48AC*	5 Amps 48VAC up to 1.8VA
HYE42XX120AC*	5 Amps 120VAC up to 1.8VA PCB Mount
HYE42XX240AC*	5 Amps 240VAC up to 1.8VA PCB Mount
HYE42XX24DC*	5 Amps 24VAC up to 1.8VA PCB Mount
HYE42XX24DC*	5 Amps 24VDC up to 1.1W PCB Mount

* Does not include LED & Manual Test/Latch

**Does not include LED

QYE Plug-In/PCB Relays 2PCO



Plug-In or PCB Mount
2 Pole Changeover



Part No.	Description
QYE21XN120AC	10 Amps 120VAC up to 1.8VA LED Plug-In
QYE21XN12AC	10 Amps 12VDC up to 1.8VA LED Plug-In
QYE21XN12DC	10 Amps 12VDC up to 1.1W LED Plug-In
QYE21XN240AC	10 Amps 240VAC up to 1.8VA LED Plug-In
QYE21XN24AC	10 Amps 24VAC up to 1.8VA LED Plug-In
QYE21XN24DC	10 Amps 24VDC up to 1.1W LED Plug-In
QYE21XX120AC	10 Amps 120VAC up to 1.8VA PCB Mount
QYE21XX12DC	10 Amps 12VDC up to 1.1W Plug-In
QYE21XX240AC	10 Amps 240VAC up to 1.8VA PCB Mount
QYE21XX24AC	10 Amps 24VAC up to 1.8VA PCB Mount
QYE21XX24DC	10 Amps 24VDC up to 1.1W Plug-In
QYE21XXF240AC	10 Amps 240VAC up to 1.8VA Plug-In
QYE21XXF24DC	10 Amps 24VDC up to 1.1W Plug-In
QYE22XX12DC	10 Amps 12VDC up to 1.1W PCB Mount
QYE22XX24DC	10 Amps 24VDC up to 1.1W PCB Mount

RSE Relays 2PCO 8 Pins / 3PCO 11 Pins



Plug-In
2 Pole Changeover/
3 Pole Changeover



Part No.	Description
2 Pole Changeover Versions (2PCO) - 8 Pins	
RSE2PN110AC*	10 Amps 110VAC 1.5W LED
RSE2PN110DC	10 Amps 110VDC 2.7VA LED & Flag
RSE2PN12AC	10 Amps 12VAC 1.5W LED & Flag
RSE2PN12DC	10 Amps 12VDC 2.7VA LED & Flag
RSE2PN230AC*	10 Amps 230VAC 1.5W LED
RSE2PN24AC	10 Amps 24VAC 1.5W LED & Flag
RSE2PN24DC*	10 Amps 24VDC 2.7VA LED
RSE2PN48DC	10 Amps 48VDC 2.7VA LED & Flag
3 Pole Changeover Versions (3PCO) - 11 Pins	
RSE3PN110AC	5 Amps 110VAC 1.5W LED & Flag
RSE3PN110DC	5 Amps 110VDC 2.7VA LED & Flag
RSE3PN12AC	5 Amps 12VAC 1.5W LED & Flag
RSE3PN12DC*	10 Amps 12VDC 2.7VA LED
RSE3PN230AC*	10 Amps 230VAC 1.5W LED
RSE3PN24AC	5 Amps 24VAC 1.5W LED & Flag
RSE3PN24DC*	10 Amps 24VDC 2.7VA LED
RSE3PN48DC	5 Amps 48VDC 2.7VA LED & Flag

* Includes Manual Test/Latch

IMO PRODUCT CATALOGUE

HME Compact Interface Relays



Plug-In
1 & 2 Pole Changeover
LED & Manual Test Latch



Part No.	Description
AC Versions	
HME11PN24AC	1 Pole Changeover (CO) 12A 24VAC
HME11PN110AC	1 Pole Changeover (CO) 12A 110VAC
HME11PN230AC	1 Pole Changeover (CO) 12A 230VAC
HME21PN24AC	2 Pole Changeover (CO) 8A 24VAC
HME21PN230AC	2 Pole Changeover (CO) 8A 230VAC
DC Versions	
HME11PN24AC	1 Pole Changeover (CO) 12A 24VAC
HME11PN110AC	1 Pole Changeover (CO) 12A 110VAC
HME11PN230AC	1 Pole Changeover (CO) 12A 230VAC
HME21PN24AC	2 Pole Changeover (CO) 8A 24VAC
HME21PN230AC	2 Pole Changeover (CO) 8A 230VAC
HME21PNG24DC	2 Pole Changeover (CO) 8A 24VDC with Gold Flash

ETS Slimline Plug-In Power Relays



6A Sealed Power Relays
Compatible with SRSI Sockets



Part No.	Description
ETS-1AN-SL-12VDC	6 Amps SPNO 12VDC AgNi
ETS-1AN-SL-24VDC	6 Amps SPNO 24VDC AgNi
ETS-1AN-SL-60VDC	6 Amps SPNO 60VDC AgNi
ETS-1CN-SL-5VDC	6 Amps SPCO 5VDC AgNi
ETS-1CN-SL-6VDC	6 Amps SPCO 6VDC AgNi
ETS-1CN-SL-9VDC	6 Amps SPCO 9VDC AgNi
ETS-1CN-SL-12VDC	6 Amps SPCO 12VDC AgNi
ETS-1CN-SL-24VDC	6 Amps SPCO 24VDC AgNi
ETS-1CN-SL-48VDC	6 Amps SPCO 48VDC AgNi
ETS-1CN-SL-60VDC	6 Amps SPCO 60VDC AgNi

Miniature High Power Relays



PCB Mount



Part No.	Description
SRRHN-1CN-SL-115VAC	SPCO 12 Amps 115VAC Coil Resistance 100Ω
SRRHN-2CT-SL-48VDC	DPCO 8 Amps 48VDC Coil Resistance 100Ω

...also available from IMO

IMO's comprehensive range of PCB Relays are one of the most extensive in the market today, and have been designed for virtually any application. Many of our PCB Relays are available with AC and DC Coils with Normally Open, Normally Closed and Change-over Contacts, being suitable for the majority of electrical or electronic applications.

Since 1970 IMO has manufactured high quality relays, and we are proud that all of our products are constructed from the highest quality materials. IMO's PCB Relay offering is second to none, and offer international approvals including UR and cUR.

Automotive Relays



Power Relays



Signal Relays



Solar Relays



PCB Relay Manufacturer
SINCE 1970



Relay Sockets for Power Relays & Plug-In Modules

For HYE Series Power Relays



Part No.	Description
<i>For HYE21 Relays</i>	
SRNE2-D	T35 DIN/Panel Mount 8 Pins
SRNE2-S	T35 DIN/Panel Mount 8 Pins
<i>For HYE31 Relays</i>	
SRPE2-0	PCB Terminal PCB Mount
SRNE3-C	T35 DIN/Panel Mount 11 Pins
SRNE3-D	T35 DIN/Panel Mount 11 Pins (with Module Slot)
<i>For HYE41 Relays</i>	
SRNE4-C	T35 DIN/Panel Mount 14 Pins
SRNE4-D	T35 DIN/Panel Mount 14 Pins
SRNE4-S	T35 DIN/Panel Mount 14 Pins
SRPE4-0	Solder Terminal, Back-Mount

For QYE Series Power Relays



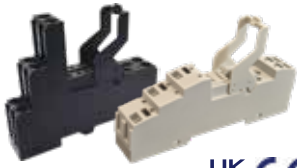
Part No.	Description
<i>For QYE21 Relays</i>	
SRHE2-C	T35 DIN/Panel Mount 8 Pins (No Modules)
SRPE2-0	PCB Terminal PCB Mount (No Modules)

For RSE Series Power Relays



Part No.	Description
<i>8 Pin Version For RSE2 Relays</i>	
SRPE8	T35 DIN/Panel Mount
SRRE8	T35 DIN/Panel Mount
<i>11 Pin Version For RSE3 Relays</i>	
SRPE11	T35 DIN/Panel Mount (No Modules)
SRRE11	T35 DIN/Panel Mount
SRRE11-M	T35 DIN/Panel Mount (for RPDM Module)

For HME Series Compact Interface Relays



Part No.	Description
SRHME-S1	Relay Base For 1P HME Relay
SRHME-S	Relay Base For 2P HME Relay
PFHME-S1	Push Fit Relay Base For 1P HME Relay
PFHME-S	Push Fit Relay Base for 2P HME Relay

For ETS Slimline Plug-In Power Relays



Part No.	Description
SRSI-24AC/DC	12-24VDC
SRSI-24DC	Coil 6-24VDC
SRSI-110AC/DC	60VDC (Input 110-125V AC/DC)
SRSI-230AC/DC	60VDC (Input 220-240V AC/DC)

For Miniature Power Relays



Part No.	Description
<i>5 Pin Version</i>	
SRSE1-0	For SRRHN Relay PCB Mount
SRNE3-S	For SRRHN Relay & Module T35 DIN Single
SRNE3-T	For SRRHN Relay & Module T35 DIN Twin
<i>8 Pin Version</i>	
SRSE2-0	For SRRHN Relay PCB Mount
SRNE5-S	For SRRHN Relay & Module T35 DIN Single
SRNE5-T	For SRRHN Relay & Module T35 DIN Twin

Relay Socket Plug-In Modules



Solder Lug or Plug On
1 Pole NO



Part No.	Description
<i>For SRNE2-D/S, SRNE3-D, SRNE4-D/S, SRNE3-S/T, SRNE5-S/T</i>	
PDLME1	6-24 AC/DC Diode LED Resistor
PDLME3	110-230 AC/DC Diode LED Resistor
PDME1	6-230 VDC Diode -A1 to +A4
PDME2	6-230 VDC Diode +A1 to -A2
PLME1	6-24 VDC Diode LED Resistor
PLME1-R	6-24 VDC Diode LED Resistor
PVME2	115 VAC Varistor
<i>For SRR8-M, SRR11-M</i>	
RPDME1	6-220 VDC Diode -A1 to +A2

Slimline Power Relay Accessories



Part No.	Description
SRSI-CC/20BLACK	20-Way Cross Connector for SRSC/SRSI
SRSI-CC/20BLUE	20-Way Cross Connector for SRSC/SRSI
SRSI-CC/20RED	20-Way Cross Connector for SRSC/SRSI

IMO PRODUCT CATALOGUE

Cam Switches

IMO's range of rotary Cam Switches incorporate a unique building block system that allows for any number of switch variants to be built and supplied to the customer, making them amongst the most flexible in the marketplace. All models have been designed with a single, central fixing hole (ø 22.5mm) for panel mounting, and finger-proof screw terminals with IP20 protection. The entire range has been manufactured in accordance with IEC 60947-3 and carry CSA and UL approvals.

The range offers a choice of 4 operators, including handle operators and key operators, with or without escutcheon plates, with the key operators allowing for key removal in all latched positions. An enclosed version is also available.

- Range of Rotary Cam Switches with Choice of 4 Operators
- Flexible & Reliable Switching Solution
- Operational Current acc. to UL: 20A
(35A & 60A Available on Request)
- Designed to IEC 60947-3
- UL Approved



OFF-ON Cam Switch 20A



Manufactured in accordance with IEC 60947-3
IP65 Rated
*Escutcheon Frame & Handle Not Included but available separately as accessories
Image for illustrative purposes only*



Part No.	Description
CS20A-A1	1 Pole 2 Position with Legend Plate
CS20A-A2	2 Pole 2 Position with Legend Plate
CS20A-A4	4 Pole 2 Position with Legend Plate
CS20A-A8	8 Pole 2 Position with Legend Plate

Changeover Switch with OFF 20A



Manufactured in accordance with IEC 60947-3
IP65 Rated
*Escutcheon Frame & Handle Not Included but available separately as accessories
Image for illustrative purposes only*



Part No.	Description
CS20A-U1	1 Pole 3 Position with Legend Plate
CS20A-U2	2 Pole 3 Position with Legend Plate
CS20A-U3	3 Pole 3 Position with Legend Plate
CS20A-U4	4 Pole 3 Position with Legend Plate
CS20A-U6	6 Pole 3 Position with Legend Plate

Changeover Switch without OFF 20A



Manufactured in accordance with IEC 60947-3
IP65 Rated
*Escutcheon Frame & Handle Not Included but available separately as accessories
Image for illustrative purposes only*



Part No.	Description
CS20A-W2	2 Pole 2 Position with Legend Plate
CS20A-W3	3 Pole 2 Position with Legend Plate
CS20A-W4	4 Pole 2 Position with Legend Plate
CS20A-W8	8 Pole 2 Position with Legend Plate

Step Cam Switch 20A



Manufactured in accordance with IEC 60947-3
IP65 Rated
*Escutcheon Frame & Handle Not Included but available separately as accessories
Image for illustrative purposes only*



Part No.	Description
CS20A-ST31	1 Pole 3 Position with Legend Plate
CS20A-ST33	3 Pole 3 Position with Legend Plate
CS20A-ST42	2 Pole 4 Position with Legend Plate
CS20A-ST45	5 Pole 4 Position with Legend Plate
CS20A-ST51	1 Pole 5 Position with Legend Plate
CS20A-ST52	2 Pole 5 Position with Legend Plate
CS20A-ST61	1 Pole 6 Position with Legend Plate

Cam Switch Accessories



Part No.	Description
RBK2	Cam Switch Handle Round Bezel Key
RB2	Cam Switch Handle Toggle Round Bezel
SPK2	Cam Switch Handle Escutcheon Plate Key
SP2	Cam Switch Handle Toggle Escutcheon Plate

Industrial Timers

IMO's comprehensive range of DIN Rail mountable Timers delivers up-to-the minute technology. Ranging from the simple single-function through to the multi-function timer with display, these timers are being used daily in all types of applications and industries, and wide input voltage capability allow these products to be installed in applications across the world.

IMO's range of Panel Mount / Plug-In Timers provide users with a range of settings and functionality and timing ranges between 0.1sec and 100hrs. Other key features include indication of time range, time up and power on timing. IMO Timers are always of the highest quality, and are backed with a Three Year Warranty.

- Wide Input Voltage Range
- Available in DIN Rail Mount, Panel Mount or Plug-In Versions
- Single or Multi-Function Versions
- UR and cURus Approved



DIN Rail Mountable Timers



Part No.	Description
TDM10	10 Function 24-230V AC/DC SPCO
TDAS	Asymmetrical 24-230V AC/DC SPCO
TDSD1	Star Delta 20-500ms 230-400VAC DPCO
TDFR	Forward Off Reverse 2P CO 10A, 0.1s-10d

Panel Mount Timers



Part No.	Description
TA11-A100-230AC	0.05s-60hr DPCO 5A 11 Pin Octal
TA11-A24AC/DC	0.05s-60hr DPCO 5A 11 Pin Octal
TA8-A100-230AC	0.05s-60hr DPCO 5A 8 Pin Octal
TA8-A24AC/DC	0.05s-60hr DPCO 5A 8 Pin Octal
TA8-DA100-230AC	0.1m-12m DPCO 5A 8 Pin Octal
TA8-SA100-230AC	0.05s-60hr SPCO 5A 8 Pin Octal
TA8-TA100-230AC	0.05s-60hr DPCO 5A 8 Pin Octal
TA8-DA24AC/DC	0.06s-12m DPCO 5A 8 Pin Octal
TA8-SA24AC/DC	0.05s-60hr SPCO Timed 5A 8 Pin Octal

IMO PRODUCT CATALOGUE

AC Variable Speed Drives

For over 35 years, IMO has been at the cutting edge of AC Variable Speed Drives technology. In 1986 we introduced the first Jaguar compact AC Variable Speed Drive (VSD). Renowned for its exceptionally high build quality, reliability and performance, the Jaguar drives range grew to become a leader in the marketplace. In adopting a no compromise design philosophy the Jaguar range of drives were able to deliver long and trouble free service lives in a wide variety of environments. At their height, Jaguar drives were being used 24 hours a day, 7 days a week, 365 days a year, in applications ranging from fans and pumps through to the most demanding and complex machines, and all of these were underwritten by our industry-leading 5 year warranty, and there are many Jaguar drives still working hard today.

With newer emerging technologies, we have developed our drives range further with the addition of SD1 micro-drives, HD2 high performance drives and the HD2IP - an IP55 protection rated drive for harsh environments. Features for these drives includes direct torque control, available Safe Torque Off (STO) and built in PLC control, removable screens, integrated EMC filtration, and a selection of industrial networking options.

All IMO variable speed drives will ensure optimal efficiency and control of squirrel cage and permanent magnet motors while providing effective protection; backed with industry-leading warranties, and application support.

- A Solution For Every Application
- Market-Leading Technical Support & Expertise
- Heritage Drives Manufacturer With Over 35 Years Experience
- 2 Year Range Warranty
- UL Approved

SD1 HD2

SD1 AC Variable Speed Drives (0.4kW ~ 110kW)

SD1 Single-Phase 110V



IP20 Rated



Part No.	Description
SD1-2.5A-11	SD1 0.4kW 0.5HP 2.5Amp Torque Vector
SD1-4.2A-11	SD1 0.75kW 1HP 4.2Amp Torque Vector
SD1-5.8A-11	SD1 1.1kW 1.4HP 5.8Amp Torque Vector

SD1 Single-Phase 230V



IP20 Rated



Part No.	Description
SD1-2.5A-21	SD1 0.4kW 0.5HP 2.5Amp Torque Vector
SD1-4.2A-21	SD1 0.75kW 1HP 4.2Amp Torque Vector
SD1-7.5A-21	SD1 1.5kW 2HP 7.5Amp Torque Vector
SD1-10A-21	SD1 2.2kW 3HP 10Amp Torque Vector

SD1 Three-Phase 230V



IP20 Rated



Part No.	Description
SD1-2.5A-23	SD1 0.4kW 0.5HP 2.5Amp Torque Vector
SD1-4.2A-23	SD1 0.75kW 1HP 4.2Amp Torque Vector
SD1-7.5A-23	SD1 1.5kW 2HP 7.5Amp Torque Vector
SD1-10A-23	SD1 2.2kW 3HP 10Amp Torque Vector

SD1 Three-Phase 480V



IP20 Rated



Part No.	Description
SD1-2.5A-43	SD1 0.75kW 1HP 2.5Amp Torque Vector
SD1-4.2A-43	SD1 1.5kW 2HP 4.2Amp Torque Vector
SD1-5.5A-43	SD1 2.2kW 3HP 5.5Amp Torque Vector
SD1-9.5A-43	SD1 4kW 5.5HP 9.5Amp Torque Vector
SD1-14A-43	SD1 5.5kW 7.5HP 14Amp Torque Vector
SD1-18.5A-43	SD1 7.5kW 10HP 18.5Amp Torque Vector
SD1-25A-43	SD1 11kW 15HP 25Amp Torque Vector

SD1 Filters & Accessories



Part No.	Description
SD1-RFC3-10	C3 Filter for Single-Phase SD1 models
SD1-RFC3-7	C3 Filter for Three-Phase SD1 models
SD1-KP	5 Digit External Mount LED Keypad
SD1-KP-CPY	5 Digit External Mount LED Keypad w/copy
SD1-KP-MB	Keypad Mounting Bracket for SD1 keypads
SD1-JL1	Filter Jumper Link for units 4kW and above

HD2 AC Variable Speed Drives (1.5kW ~ 500kW)

The HD2 range of inverters offer unrivalled performance. Designed for controlling asynchronous AC induction motors and permanent magnet synchronous motors, the HD2 torque vector control range are packed full of features as standard that you would usually expect to find on considerably higher specified inverters.

Utilising the most advanced vector control technology, the HD2 range delivers sensorless and closed loop vector control for both asynchronous and synchronous motors giving exceptional speed response and control. HD2 offers unparalleled reliability, environmental adaptability, high precision and stable performance - everything you have come to expect from an IMO inverter drive.

The HD2 also offers some significant advantages to the customer including a huge range of functions with simple operation, industrial communication protocols (ModbusRTU, EtherCAT and Profinet) along with Bluetooth and WiFi communication for programming, and with more communication options in development.

- Three Phase (480V) Up To 500kW (670HP)
- Torque Vector Control With Safe Torque Off (STO) As Standard
- Integral ModbusRTU / RS485
- Bluetooth & WiFi Communication
- Multiple Expansion Options



HD2 Three-Phase 230V



IP20 Rated



Part No.	Description
HD2-4.5A-23	HD2 0.75kW 1HP 4.5Amp Torque Vector
HD2-7A-23	HD2 1.5kW 2HP 7Amp Torque Vector
HD2-10A-23	HD2 2.2kW 3HP 10Amp Torque Vector
HD2-16A-23	HD2 4kW 5.5HP 16Amp Torque Vector
HD2-20A-23	HD2 5.5kW 7.5HP 20Amp Torque Vector
HD2-30A-23	HD2 7.5kW 10HP 30Amp Torque Vector
HD2-42A-23	HD2 11kW 15HP 42Amp Torque Vector
HD2-55A-23	HD2 15kW 20HP 55Amp Torque Vector
HD2-70A-23	HD2 18.5kW 25HP 70Amp Torque Vector
HD2-80A-23	HD2 22kW 30HP 80Amp Torque Vector
HD2-110A-23	HD2 30kW 40HP 110Amp Torque Vector
HD2-130A-23	HD2 37kW 50HP 130Amp Torque Vector
HD2-160A-23	HD2 45kW 60HP 160Amp Torque Vector
HD2-200A-23	HD2 55kW 75HP 200Amp Torque Vector

HD2 Three-Phase 480V



IP20 Rated



Part No.	Description
HD2-3.7A-43-UL	HD2 1.5kW 2HP 3.7Amp Torque Vector
HD2-5A-43-UL	HD2 2.2kW 3HP 5Amp Torque Vector
HD2-9.5A-43-UL	HD2 4kW 5.5HP 9.5Amp Torque Vector
HD2-14A-43-UL	HD2 5.5kW 7.5HP 14Amp Torque Vector
HD2-18.5A-43-UL	HD2 7.5kW 10HP 18.5Amp Torque Vector
HD2-25A-43-UL	HD2 11kW 15HP 25Amp Torque Vector
HD2-32A-43-UL	HD2 15kW 20HP 32Amp Torque Vector
HD2-38A-43-UL	HD2 18.5kW 25HP 38Amp Torque Vector
HD2-45A-43-UL	HD2 22kW 30HP 45Amp Torque Vector
HD2-60A-43-UL	HD2 30kW 40HP 60Amp Torque Vector
HD2-75A-43-UL	HD2 37kW 50HP 75Amp Torque Vector
HD2-92A-43-UL	HD2 45kW 60HP 92Amp Torque Vector
HD2-115A-43-UL	HD2 55kW 75HP 115Amp Torque Vector
HD2-150A-43-UL	HD2 75kW 90HP 150Amp Torque Vector
HD2-180A-43-UL	HD2 90kW 125HP 180Amp Torque Vector
HD2-215A-43-UL	HD2 110kW 150HP 215Amp Torque Vector
HD2-260A-43	HD2 132kW 175HP 260Amp Torque Vector
HD2-305A-43	HD2 160kW 215HP 305Amp Torque Vector
HD2-340A-43	HD2 185kW 250HP 340Amp Torque Vector
HD2-380A-43	HD2 200kW 270HP 380Amp Torque Vector
HD2-425A-43	HD2 220kW 300HP 425Amp Torque Vector
HD2-480A-43	HD2 250kW 335HP 480Amp Torque Vector
HD2-530A-43	HD2 280kW 375HP 530Amp Torque Vector
HD2-600A-43	HD2 315kW 420HP 600Amp Torque Vector
HD2-650A-43	HD2 355kW 475HP 650Amp Torque Vector
HD2-720A-43	HD2 400kW 535HP 720Amp Torque Vector
HD2-820A-43	HD2 450kW 600HP 820Amp Torque Vector
HD2-860A-43	HD2 500kW 670HP 860Amp Torque Vector

HD2 Expansion Cards



Part No.	Description
HD2-E-EIP	Ethernet IP Communications Card
HD2-E-IO	IO Expansion Card
HD2-E-PLC	Programmable Expansion Card (CODESYS)
HD2-E-BTP	Bluetooth Communication Card (Internal Antenna)
HD2-E-BTM	Bluetooth Communication Card (External Antenna)
HD2-E-ENET	Ethernet Communication Card
HD2-E-WFP	WiFi Communication Card (Internal Antenna)
HD2-E-WFM	WiFi Communication Card (External Antenna)
HD2-E-COP	CANopen Communication Card
HD2-E-CAN	CAN Master-Slave Communication Card
HD2-E-PDP	PROFIBUS-DP Communication Card
HD2-E-PRF	PROFINET Communication Card
HD2-E-PGIM	Multi-Function Incremental PG Card
HD2-E-PGI	5V Differential PG Card
HD2-E-PGR	Rotary Transformer PG Card
HD2-KP-LCD	LCD Multi-function keypad
HD2-KP-MB	Keypad mounting bracket

Need Some Technical Application Support?

Call
404-476-8812
or Email
support-na@imopc.com

IMO PRODUCT CATALOGUE

iSmart Intelligent Relays

Commonly found in small and medium applications, the iSmart Programmable Relay from IMO is a highly cost-effective yet flexible controller that offers many of the functions found in a traditional PLCs and is an ideal controller for applications such as packaging and vending machines, conveyors, and automatic door systems.

iSmart is available as an AC or DC base module with a choice of input and output options as well as a selection of digital and relay expansion modules including support for temperature inputs and analogue inputs and outputs. iSmart is supplied with a built in HMI as standard or optional blind front module and is programmed using IMO's configuration software; available at no cost and is complete with a built-in simulation tool.

- Highly Cost Effective Controller For Small Automation Applications
- Digital I/O From 10 To 44 Points, 12 Analog I/O & Modbus Options
- High Relay Switching Capability (8A)
- FREE iSmart SMT Client Software



iSmart Base Units with screen



Smart Relay & HMI



Part No.	Description
iSmart Version 3 Programmable Relays	
SMT-ED-R12-V3	24VDC 8 DC In, 2A/D In, 4 RO
SMT-ED-R20-V3	24VDC 12 DI, 4 AI, 8 RO
SMT-ED-T12-V3	24VDC 6 DI, 2 AI, 4 Trans Out
SMT-ED-T20-V3	24VDC 12 DI, 4 AI, 8 Trans Out
SMT-ED12-R12-V3	12VDC 6 DI, 2 AI, 4 RO
SMT-ED12-R20-V3	12VDC 12 DI, 4 AI, 8 RO
SMT-EA-R10-V3	230VAC 6 DI (AC), 2 AI, 4 Trans Out
SMT-EA-R20-V3	230VAC 12 DI (AC), 4 AI, 8 Trans Out
SMT-EA24-R12-V3	24VAC 6 AC In, 4 RO
SMT-EA24-R20-V3	24VAC 12 AC In, 8 RO
iSmart Version 4 Programmable Relays with Ethernet	
SMT4-ED-R12	24VDC 8 DC In, 2A/D In, 4 RO
SMT4-ED-R20	24VDC 12 DI, 4 AI, 8 RO
SMT4-EA-R10	230VAC 6 DI (AC), 2 AI, 4 Trans Out
SMT4-EA-R20	230VAC 12 DI (AC), 4 AI, 8 Trans Out

iSmart Base Units with RS485



Smart Relay & HMI



Part No.	Description
iSmart Version 3 Programmable Relays	
SMT-CD-R20-V3	24VDC 12 DI, 4 AI, 8 RO, Modbus
SMT-CD-T20-V3	24VDC 12 DI, 4 AI, 8 Trans Out, Modbus
SMT-CD12-R20-V3	12VDC 12 DI, 4 AI, 8 RO, Modbus
iSmart Version 4 Programmable Relays with Ethernet	
SMT4-CD-R20	24VDC 12 DI, 4 AI, 8 RO, Modbus

Expansion Units



Part No.	Description
SMT-MA-R8	I/O Expansion 100-240VAC 4 DI, 4 RO
SMT-MD-R8	I/O Expansion 24VDC 4 DI, 4 RO
SMT-MD-T8	I/O Expansion 24VDC 4 DI, 4 Trans Out
SMT-MD-4AI	I/O Expansion 24VDC 4 AI
SMT-4PT	I/O Expansion 24VDC 4 PT100
SMT-2AO	I/O Expansion 24VDC 2 AO
SMT-MA24-R8	I/O Expansion 24VAC 4 DI, 4 RO

iSmart Base Units without screen



Smart Relay



Part No.	Description
iSmart Version 3 Programmable Relays	
SMT-BD-R12-V3	24VDC 6 DI, 2 AI, 4 RO
SMT-BA-R20-V3	24VDC 12 DI, 4 AI, 8 RO
SMT-BD-T12-V3	24VDC 6 DI, 2 AI, 4 Trans Out
SMT-BD-T20-V3	24VDC 12 DI, 4 AI, 8 Trans Out
SMT-BA-R10-V3	230VAC 6 DI (AC), 4 RO
SMT-BA-R20-V3	230VAC 12 DI (AC), 8 RO
iSmart Version 4 Programmable Relays with Ethernet	
SMT4-BD-R12	24VDC 6 DI, 2 AI, 4 RO
SMT4-BD-R20	24VDC 12 DI (AC), 8 RO

Accessories



Part No.	Description
SMTIV-RS232	Communication Cable iView to iSmart
SMT-USB	USB Programming Cable
SMT-PC03	Programming Cable
SMT-PM04-V3	32k Flash Memory Expansion

iView Advanced Human Machine Interface (HMI)

iView is a range of advanced Human Machine Interface (HMI) screens that provide customers with an effective, yet competitive means to view and control a process. Inbuilt to all iView HMI's is a selection of networking ports that supports over 500 common industry protocols and is available in a high-resolution display from a 4.3" to a 15.0" color TFT touch screen that supports up to 65k of colors and shades.

Standard features include data and alarm logging, internet remote control and monitoring, built-in script logic and graphics library, username and password manager, automated event processing and scheduling. The high resolution, back-lit LED display will render and animate interactive graphics effectively and is programmable using IMO's free and unlimited iView configuration software.

- Enables Human Control & Operation Of Machines & Processes
- Over 500 Industrial Communications Protocols As Standard inc. BACnet & Modbus
- Wide Range Of Products To Suit All Applications
- FREE Licensed Programming Software



Ingress Protection for Dust Proofing and Water Resistance



Plug in power terminal for easyfit



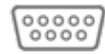
File transfer functionality allowing remote download



Aluminium bezel available on selected models



Integral Ethernet Port for remote connectivity



3 Integral Serial Ports including 1 x Screwless



microSD™ card storage for Data Logging



2 Integral USB Ports - 1 x USB A, 1 x USB B



iView Advanced HMI M Series



IP66 Rated Plastic Bezel
Ideal For Medium Range Applications



Part No.	Description
IV204M-SEAP	iView HMI with 4.3" Color Screen
IV207M-SEAP	iView HMI with 7" Color Screen
IV210M-SEAP	iView HMI with 10.1" Color Screen
IV212M-SEAA	iView HMI with 12.1" Color Screen
IV215M-SEAA	iView HMI with 15.0" Color Screen

Accessories & Software



Part No.	Description
Accessories	
IV-USB	iView to PC Communication Cable
MSD-16GB	16GB microSD™ Card
SMTIV-RS232	iView to iSmart Communication Cable
Software	
IV2-DEV-LIC	iView Remote Device License
IV2-REM-ACC	iView Remote Account License 500 Points



Need Some Technical Application Support?

Call

404-476-8812

or Email

support-na@imopc.com

IMO PRODUCT CATALOGUE

i3 Intelligent Control Station

IMO's i3 intelligent controller offers a unique solution combining both Programmable Logic Controller (PLC) and Human Machine Interface (HMI) into one device. As microprocessor technology moves forward, it is a logical step to rationalise hardware and condense many traditional control components down into a single, compact unit. This gives the benefit of reducing manufacturing costs, reducing overall power consumption of the control solution and reducing application development time. It also allows customers to standardise to a single controller to fit most of their applications, and allows greater flexibility for future developments.

- Addressable Function Keys
- CAN Port
- Up To 6 Analog Inputs
- Up To 4 Analog Outputs
- Stepper Control (PWM)
- PID Control
- Alarm Function
- IP65 (NEMA 4X) Protection
- Configurable Serial Comms Port
- Up To 24 Digital Inputs
- Up To 16 Digital Outputs
- High Speed Counter
- Modern Interface
- CAN & Modbus Based Remote I/O
- Real-Time Clock
- UL Approved



i3 Lite Controllers

i3AL Lite Intelligent Control Station



IP65 (NEMA 4X) Rated
2.2" Mono Screen



Part No.	Description
I3AL12X/10D12-SCHF	12DI, 6RO, 2HSC Out, 4AI, 2AO
I3AL12X/10D14-SCHF	12DI, 12DO, 4AI, 2AO

i3CL Lite Intelligent Control Station



IP65 (NEMA 4X) Rated
4.3" Color Screen



Part No.	Description
I3CL12Y/10D12-SEHF	12DI, 6RO, 2HSC Out, 4AI, 2AO
I3CL12Y/10D14-SEHF	12DI, 12DO, 2HSC Out, 4AI, 2AO

i3EL Lite Intelligent Control Station



IP65 (NEMA 4X) Rated
7.0" Color Screen



Part No.	Description
I3EL12Z/10D12-SEHF	12DI, 6RO, 2HSC Out, 4AI, 2AO
I3EL12Z/10D14-SEHF	12DI, 12DO, 2HSC Out, 4AI, 2AO

i3 Full Feature Controllers

i3AX Intelligent Control Station



IP65 (NEMA 4X) Rated
2.2" Mono Screen
Ethernet + Mini USB



Part No.	Description
I3AX12X/10B04-SEHF	12DI, 12DO, 2AI
I3AX12X/10D03-SEHF	12DI, 6RO, 4AI
I3AX12X/10E24-SEHF	12DI, 12DO, 6UAI, 4AO
I3AX12X/13C14-SEHF	12DI, 12DO, 2UAI, 2AO
I3AX12X/20B05-SEHF	24DI, 16DO, 2AI

i3BX Intelligent Control Station



IP65 (NEMA 4X) Rated
3.5" Mono Screen
Ethernet + Mini USB



Part No.	Description
I3BX12Y/10D03-SEHF	12DI, 6RO, 4AI
I3BX12Y/10E24-SEHF	12DI, 12DO, 6UAI, 4AO
I3BX12Y/13C14-SEHF	12DI, 12DO, 2UAI, 2AO
I3BX12Y/20B05-SEHF	24DI, 6RO, 2AI

i3CY Mini Intelligent Control Station

NEW



IP65 (NEMA 4X) Rated
3.5" Color Screen
Ethernet + Mini USB



Part No.	Description
I3CYM12Y/10B04-SEHF	i3CYM 12DI, 12DO, 2AI
I3CYM12Y/10D03-SEHF	i3CYM 12DI, 6DO (Relay), 3AI
I3CYM12Y/13C14-SEHF	i3CYM 12DI, 12DO, 2UAI*, 2AO
I3CYM12Y/20B05-SEHF	i3CYM 24DI, 16DO, 2AI
I3CYM12Y/00000-SEHF	i3CYM without I/O
I3CYM12Y/10E24-SEHF	i3CYM 12DI, 12DO, 6UAI*, 4AO

i3CY Intelligent Control Station

NEW



IP65 (NEMA 4X) Rated
5.7" Color Screen
Ethernet + Mini USB



Part No.	Description
I3CY14Z/10D03-SEHF	i3CY 12DI, 6DO (Relay), 4AI
I3CY14Z/20B05-SEHF	i3CY 24DI, 16DO, 2AI
I3CY14Z/13C14-SEHF	i3CY 12DI, 12DO, 2UAI*, 2AO
I3CY14Z/10E24-SEHF	i3CY 12DI, 12DO, 6UAI*, 4AO
I3CY14Z/00000-SEHF	i3CY without I/O

i3EY Intelligent Control Station

NEW



IP65 (NEMA 4X) Rated
7.0" Color Screen
Ethernet + Mini USB



Part No.	Description
I3EY14Z/10B04-SEHF	i3EY 12DI, 12DO, 2AI
I3EY14Z/10D03-SEHF	i3EY 12DI, 6DO (Relay), 4AI
I3EY14Z/13C14-SEHF	i3EY 12DI, 12DO, 2UAI*, 2AO
I3EY14Z/20B05-SEHF	i3EY 24DI, 16DO, 2AI
I3EY14Z/00000-SEHF	i3EY without I/O
I3EY14Z/10E24-SEHF	i3EY 12DI, 12DO, 6UAI*, 4AO

i3DY Intelligent Control Station

NEW



IP65 (NEMA 4X) Rated
10.4" Color Screen
Ethernet + Mini USB



Part No.	Description
I3DY14Z/10D03-SEHF	i3DY 12DI, 6DO (Relay), 4AI
I3DY14Z/13C14-SEHF	i3DY 12DI, 12DO, 2UAI*, 2AO
I3DY14Z/10E24-SEHF	i3DY 12DI, 12DO, 6AI, 4AO
I3DY14Z/20B05-SEHF	i3DY 24DI, 16DO, 2AI
I3DY14Z/00000-SEHF	i3DY without I/O
I3DY14Z/10B04-SEHF	i3DY 12DI, 12DO, 2AI

i3HX Intelligent Control Station



IP65 (NEMA 4X) Rated
15.0" Color Screen



Part No.	Description
I3HX15/00000-SEHF	i3HX without I/O

Accessories



Part No.	Description
I3-MA-25G	Quadband GSM Modem with Antenna
I3-MA-30G	Global GSM Modem with Antenna
I3PC45	Programming Cable
I3-RL-BAT	Replacement Battery
I3-GPS	GPS Module RS232

i3RMI Remote Machine Interface



Monitor & Control Plant Data
From Your Mobile Device

Part No.	Description
I3-RMI-BASIC	RMI License 5 Users 25 Pages 100 Points
I3-RMI-PRO	RMI License 254 Users 1,023 Pages 50,000 Points
I3-TRANSFER	i3 File Transfer Software
I3PORTAL	i3 Remote Operator Software Single License

Remote I/O

- For Use With:
i3AX, i3BX, i3CY Mini, i3CY, i3DY,
i3EY & i3HX
- Up To 8 I/O Modules Per Base
- Removeable Terminals Strips
- Compact Size
- DIN Rail Mountable
- Analog I/O Including mA/V,
Thermocouple & RTD
- Work With Modbus TCP &
Ethernet IP

Smart I/O Ethernet Header



Part No.	Description
XEL-BSSRT	Ethernet Header

**Need Some Technical
Application Support?**

Call
404-476-8812
or Email
support-na@imopc.com

IMO PRODUCT CATALOGUE

Limit Switches

Common to virtually every mechanical machine process will be a selection of mechanically operated limit switches that provide essential position or status to an intelligent control system. IMO's family of high quality industrial mechanical limit switches encompass a broad range of industrial Heavy Duty, Compact, Micro, and Pre-cabled switches, each with a choice of operator types and accessories.

IMO limit switches are available as a plastic or metal IP67 rated body, and are available with a single or dual threaded entry. Switching contacts include a snap-action, bifurcated contact for low resistance and high reliability, and are available with an optional gold-flash contact as well as a sealed potted switch option.

- Bifurcated Contacts For Low Resistance & High Reliability
- Over 3,000 Configurations
- Metal Or Plastic Housings Available
- Range of Micro Switches Available



Compact Metal Body Limit Switches



Single Conduit Entry
IP67 Rated



Part No.	Description
LMC5A01	Short Piston Plunger
LMC5A02	One-Way Roller (Top Actuated)
LMC5A05	One-Way Roller (Side Actuated)
LMC5A07	One-Way Roller (Adjustable)
LMC5A08	Piston Plunger (Sealed)
LMC5A13	M18 Piston Plunger
LMC5A15	11mm Roller Plunger
LMC5A20	Coil Spring & Rod (Sealed)
LMC5A21	Cats Whisker
LMC5A25	Coiled Spring (Sealed)
LMC5A31	Roller Lever
LMC5A33	Lever Rod (Square)
LMC5A50	Lever Rod (Round)
LMC5A51	Large Offset Roller Lever
LMC5A52	Roller Lever Long
LMC5A54	Offset Roller Lever
LMC5A55	Adjustable Roller Lever
LMC5A69	Lever Rod (Glass Fibre)

Compact Plastic Body Limit Switches



Single Conduit Entry
IP67 Rated



Part No.	Description
LRC5A01	Short Piston Plunger
LRC5A02	One-Way Roller (Top Actuated)
LRC5A05	One-Way Roller (Side Actuated)
LRC5A07	One-Way Roller (Adjustable)
LRC5A08	Piston Plunger (Sealed)
LRC5A10	M12 Piston Plunger
LRC5A13	M18 Piston Plunger
LRC5A15	11mm Roller Plunger
LRC5A20	Coil Spring & Rod (Sealed)
LRC5A21	Cats Whisker
LRC5A25	Coiled Spring (Sealed)
LRC5A31	Roller Lever
LRC5A33	Lever Rod (Square)
LRC5A50	Lever Rod (Round)
LRC5A51	Large Offset Roller Lever
LRC5A52	Roller Lever Long
LRC5A54	Offset Roller Lever
LRC5A55	Adjustable Roller Lever
LRC5A69	Lever Rod (Glass Fibre)

Compact Plastic Body Limit Switches



Double Conduit Entry
IP67 Rated



Part No.	Description
LXC5A01	Short Piston Plunger
LXC5A02	One-Way Roller (Top Actuated)
LXC5A05	One-Way Roller (Side Actuated)
LXC5A07	One-Way Roller (Adjustable)
LXC5A08	Piston Plunger (Sealed)
LXC5A13	M18 Piston Plunger
LXC5A15	11mm Roller Plunger
LXC5A20	Coil Spring & Rod (Sealed)
LXC5A21	Cats Whisker
LXC5A25	Coiled Spring (Sealed)
LXC5A31	Roller Lever
LXC5A33	Lever Rod (Square)
LXC5A50	Lever Rod (Round)
LXC5A51	Large Offset Roller Lever
LXC5A52	Roller Lever Long
LXC5A54	Offset Roller Lever
LXC5A55	Adjustable Roller Lever
LXC5A69	Lever Rod (Glass Fibre)

Standard Metal Body Limit Switches



Single Conduit Entry
IP67 Rated



Part No.	Description
LDC5A35	Adjustable Roller Lever
LDC5A25	Sealed Coiled Spring
LDC5A31-1	Steel Roller Lever With Offset
LDC5A31	Roller Lever With Offset
LDC5A41	Two Stable Positions, 1 Track
LDC5A05	One Way Roller Side Actuation
LDC5A20	Sealed Coil Spring + Rod
LDC5A10	Sealed Piston Plunger

We can supply a huge range of different configurations and styles, so if you don't see what you are looking for here, please refer to www.imoautomation.com or contact IMO for more information and pricing.

Safety Limit Switches

IMO's range of Safety Limit and Rope-Pull Switches have been designed to provide reliable safety for machines requiring perimeter guarding against mechanical danger. This comprehensive range includes a tension-type: emergency rope switch, rotating head and lever switching for open guard sensing and high-speed key entry switching with a design that protects against damage caused by slamming guards.

IMO Safety Limit Switches can operate at up to 3600 operations per hour and have bifurcated gold plated contacts that offer longer life and improved continuity. Contact change at 6° means that the switches give an early indication of an open guard. They come with PG13.5 or optional M20 conduit entry, an IP67 rated terminal chamber and eight contact block configurations.

- Available In A Wide Choice Of Contact Block Configurations
- Single, Double & Triple Conduit Entry Types
- Standard & Compact Sizes
- Range Conforms To BS EN 60204-1 & BS EN 1088



Standard Metal Body Limit Switches



IP67 Rated



Part No.	Description
LDC18MR-F120	90° Key NO NC Controlled by Lock Metal Body
LDC6JK-F1	90° Actuator NO+NC Metal Body
LDC6JK-F2	Flat Actuator NO+NC Metal Body
LDC9JK-F	Flat Actuator 2NC Metal Body
LDC9R2-F120	90° Key 2NC w/Delayed Key Metal Body
LDC20R2-F	Flat Actuator NO+2NC w/Delayed Key Metal Body
LDC20R2-F1	90° Key NO+2NC w/Delayed Key Metal Body
LPC9R2-F1	90° Key 2NC w/Delayed Release Plastic Body

Compact Plastic Door Interlock Switches



IP67 Rated



Part No.	Description
LRC18CH	Hinge Operated NO+NC Slow Action
LRC20JK	No Actuator NO+2NC Slow Action
LRC20JK-D	Flat Actuator NO+2NC Slow Action
LRC20JK-D2	Flexible Actuator NO+2NC Slow Action
LRC6JK-D	Flat Actuator NO+NC Slow Action
LRC6JK-D1	90° Actuator NO+NC Slow Action
LRC6JK-D2	Flexible Actuator NO+NC Slow Action
LRC6JK-DX70	Flat Actuator NO+NC Slow Action M12 Plug
LRC6JK-D1X70	90° Actuator NO+NC Slow Action M12 Plug
LRC9JK	Without Key 2NC
LRC9JK-D	Flat Actuator 2NC
LRC9JK-D1	90° Actuator 2NC
LRC9JK-D3	Adjustable Act 2NC
LWC33DK-20	No Act NO+NC Slow Action 2xM20 Entry
LRC18CH-L6	Hinge Operated NO+ NC & 120.5mm Solid Shaft

Solenoid Door Interlock Switches



IP67 Rated



Part No.	Description
LGMSAS1D0Z-F28	24VAC/DC Univ Ac. NO+NC NO+NC On to Release
LGMSAS1E0Z	24AC/DC No Act NO+NC, NO+NC Off to Release
LGMSAS1E3Z	12VDC No Act NO+NC NO+NC Off to Release
LGMSPS1E0A	24VAC/DC No Act NC 3NC Off to Release 2LED
PSC186OF120-F	120VA/DC Flat Act NO+NC On to Release
PSC206OF024-F	24VAC/DC Flat Act NO+2NC On to Release
PSC206OF024-F1	24VAC/DC 90° Act NO+2NC On to Release
PSC206OF024-F2	24VAC/DC Flex Act NO+2NC On to Release
PSC206OF024-F3	24VAC/DC Adj Act NO+2NC On to Release
PSC206ON024-F	24VAC/DC Flat Act NO+2NC Off to Release
PSC206ON024-F1	24VAC/DC 90° Act NO+2NC Off to Release
PSC286OF024-F1	24VAC/DC 90° Act NC NO+NC On to Release/Key
PSC286ON024-F3	24VAC/DC Adj Act NC NO+NC Off to Release
PSC296OF024-F3	24VAC/DC Adj Act NC 2NC On to Release
PSC296OF120-F320	120VA/DC Adj Act NC 2NC On to Release
PSC306OF024-F7	24VAC/DC Jointed Act 2NC NC On to Release
PSC306ON024-F1	24VAC/DC 90° Act 2NC NC Off to Release

Metal Body Rope Switches



IP67 Rated



Part No.	Description
LDC18RRL	NO+NC 90° Head to Left + Reset
LDC18RRR	NO+NC 90° Head to Right + Reset
LDC18RRS	NO+NC Head Straight + Reset
LDC20RRS	NO+2NC Slow Action BBM + Reset
LDC9RRL	2NC Head 90° to Left + Reset
LDC9RRR	2NC Head 90° to Right + Reset
LDC9RRS	2NC Head Straight + Reset
LLC9RRS	2NC + Reset

We can supply a huge range of different configurations and styles, so if you don't see what you are looking for here, please refer to www.imoautomation.com or contact IMO for more information and pricing.

IMO PRODUCT CATALOGUE

Proximity Sensors

IMO's high quality industrial Proximity Sensors include a wide range of cylindrical inductive proximity and capacitive solid-state sensors as well as a choice of cylindrical and mini-block ultrasonic sensors for the precise detection and orientation of an object. Our sensors are water resistant, with optional high temperature and harsh duty types available as well as a choice of sensing ranges, AC and DC types, and a selection of signal outputs such as NPN, PNP, and analogue outputs.

Cylindrical inductive sensors are stocked in standard diameters including M8, M12, M18 and M30 sizes as well as shielded, unshielded, and extended ranges, while capacitive sensors are available in M18 and M30 diameter sizes. All sensors are available pre-cabled or with a choice between a 3-pin M8 or 4-pin M12 quick connect.

- Super-Miniature Models For Use In Small Machines
- Designed For Use In Harsh Environments (-40°F to 176°F)
- IP67 Protection Rating, With Many IP69K Compliant Models For The Food Industry
- UL Approved



Miniature Inductive AA & AC Sensors



IP67 Rated
LED Indication
Cable Or Plug Exit



Part No.	Description
AA Sensors - 3mm Diameter Shielded	
AA1/AN-1A	PUR Cable 2m DC NO NPN Sn=0.6mm
AA1/AP-1A	PUR Cable 2m DC NO PNP Sn=0.6mm
AA1/CN-1A	PUR Cable 2m DC NC NPN Sn=0.6mm
AA1/CP-1A	PUR Cable 2m DC NC PNP Sn=0.6mm
AA1/AP-3A	PUR Cable 2m DC NO NPN Sn=1mm
AA1/CN-3A	PUR Cable 2m DC NC NPN Sn=1mm
AC Sensors - 4mm Diameter Shielded	
AC1/AN-1A	Cable 2m DC NO NPN Sn=0.8mm
AC1/AN-1F	M8 Plug 3 Pole DC NO NPN Sn=0.8mm
AC1/AN-3A	Cable 2m DC NO NPN Sn=1.5mm
AC1/AN-3F	M8 Plug 3 Pole DC NO NPN Sn=1.5mm
AC1/AP-1A	Cable 5m DC NO PNP Sn=0.8mm
AC1/AP-1F	M8 Plug 3 Pole DC NO PNP Sn=0.8mm
AC1/AP-3A	Cable 5m DC NO PNP Sn=1.5mm
AC1/AP-3F	M8 Plug 3 Pole DC NO PNP Sn=1.5mm
AC1/CN-1A	Cable 2m DC NC NPN Sn=0.8mm
AC1/CN-1F	M8 Plug 3 Pole DC NC NPN Sn=0.8mm
AC1/CP-1A	Cable 2m DC NC PNP Sn=0.8mm
AC1/CP-1F	M8 Plug 3 Pole DC NC PNP Sn=0.8mm

Standard Distance AD Sensors



IP67 Rated
M5 Shielded



Part No.	Description
AD1/AP-1A	Cable 2m DC NO NPN Sn=0.8mm
AD1/AP-1F	M8 Plug 3 Pole DC NO PNP Sn=0.8mm
AD1/AN-1A	Cable 2m DC NO NPN Sn=0.8mm
AD1/AN-1F	M8 Plug 3 Pole DC NO NPN Sn=0.8mm
AD1/CN-1A	Cable 2m DC NC NPN Sn=0.8mm
AD1/CN-1F	M8 Plug 3 Pole DC NC NPN Sn=0.8mm
AD1/CP-1A	Cable 2m DC NC PNP Sn=0.8mm
AD1/CP-1F	M8 Plug 3 Pole DC NC PNP Sn=0.8mm

PB Inductive Sensors



IP67 Rated
LED Indication
(Standard Distance Only)
M12 Plug Exit



Part No.	Description
Standard Sensing Distance - Shielded Type	
PB0801/DSAP-H	M8 PNP 1.5mm Range 66mm Length
PB1202/DSAP-H	M12 PNP 2mm Range 71mm Length
PB1805/DSAP-H	M18 PNP 5mm Range 62mm Length
PB3010/DSAP-H	M30 PNP 10mm Range 68mm Length
Standard Sensing Distance - Unshielded Type	
PB0802/DUAP-H	M8 PNP 2mm Range 71mm Length
PB1204/DUAP-H	M12 PNP 4mm Range 70mm Length
PB1808/DUAP-H	M18 PNP 8mm Range 70.5mm Length
PB3015/DUAP-H	M30 PNP 15mm Range 81mm Length
Long Sensing Distance - Shielded Type	
PB0801/DSAP-H	M8 PNP 2mm Range 66mm Length
PB1204/DSAP-H	M12 PNP 4mm Range 65mm Length
PB1808/DSAP-H	M18 PNP 8mm Range 62mm Length
PB3015/DSAP-H	M30 PNP 15mm Range 68mm Length
Long Sensing Distance - Unshielded Type	
PB0804/DUAN-H*	M8 NPN 4mm Range 50mm Length
PB1207/DUAP-H	M12 PNP 7mm Range 70mm Length
PB1812/DUAP-H	M18 PNP 12mm Range 70.5mm Length
PB3015/DUAP-H	M30 PNP 22mm Range 81mm Length

* 2m Cable Exit. Most devices are available as pre-cabled, or with M12 connector.

Capacitive Sensors



IP67 Rated



Part No.	Description
C18P/BP-1A	Cap. Sensor M18 8mm AC
C18P/A0-1E	Cap. Sensor M18 8mm AC
C30P/00-1E	Cap. Sensor M30 16mm AC SCR
C30M/00-1E	Cap. Sensor M30 16mm AC SCR SS Body

Ultrasonic Sensors



IP67 Rated



Part No.	Description
UK1C/G1-0E	Ultrasonic Sensor 0.9m 0-10V
UK1D/G1-0E	Ultrasonic Sensor 1.6m 0-10V
UK1D/G2-0E	Ultrasonic Sensor 1.5m 4-20mA

We can supply a huge range of different configurations and styles, so if you don't see what you are looking for here, please refer to www.imoautomation.com or contact IMO for more information and pricing.

Photoelectric Sensors

IMO manufactures an extensive range of high quality and high performance photoelectric sensors that deliver precise detection of objects within an automated process. These sensors include a selection of through-beam, diffuse and retro-reflective types and are available as a visible LED, ultra-violet or laser optic type.

Sensor styles includes an IP67 rated cylindrical, three block styles: fibre-optic; fork; and area sensors, which available as a pre-cabled or with universal quick disconnect plug. These sensors are available as AC or DC powered and offering relay, digital and analogue output options. Accessories are available including a range of reflectors, reflective tape, and cables, and various mounting options. All sensors include IMO's industry-leading three year warranty.

- Huge Selection Of Block & Barrel Type Sensors
- 3 Year Manufacturers Warranty Across The Range
- Selection Of Complimentary Accessories
- UL Approved



QD Miniature Photoelectric Sensors



IP67 Rated
Dimensions: 21x31.2x12.8mm



Part No.	Description
QDRP1/0P-OF	Polarized-Retro 5m PNP
QDID4/0P-OF	Diffuse Reflection 1.5m PNP
QDRP1/0N-OF	Polarized-Retro 5m NPN
QDID4/0N-OF	Diffuse Reflection 1.5m NPN
QDIP2/0P-0A	Polarized-Retro 7m PNP
QDRBS/0P-OF	Diffuse Reflection 0.1m PNP BGS
QDIBS/0P-OF	Diffuse Reflection M8 Plug PNP BGS
QDRCM1/0P-OF	Polarized-Retro M8 Plug PNP
QDRD2/0P-OF	Diffuse Reflection M8 Plug PNP
QDRE/00-OF	Through-Beam Emitter M8 Plug
QDRER/0N-OF	Through-Beam TX & RX M8 Plug NPN
QDRR/0N-OF	Through-Beam Receiver M8 Plug NPN

NOTE:
BGS = Background Suppression

BX80 Area Photoelectric Sensors



IP67 Rated
Through-Beam Sensors



Part No.	Description
BX80A/1P-0H	Area Sensor Receiver 2m PNP
BX80S/10-0H	Area Sensor Emitter 2m
BX80A/1P-1H	Area Sensor Receiver 2m PNP Aluminium Body
BX80A/5P-0H	Area Sensor Receiver 0.25m PNP
BX80S/50-0H	Area Sensor Emitter 0.25m
BX80S/10-1H	Area Sensor Emitter 2m Aluminium Body
BX80S/10-1A	Area Sensor Emitter 2m with 2m Cable

SQD Compact Photoelectric Sensors



IP67 Rated
Dimensions: 50x50x17mm



Part No.	Description
SQE/OA20-C	Through-beam Emitter 20m AC
SQG/B00.5-P	Diffuse 0.5m DC Background Suppression
SQP/C06-C	Polarized Retro 6m AC SPDT RLY
SQR/C020-C	Through-beam Receiver 20m AC SPDT RLY
SQD/B01-C	Diffuse Sn= 1000mm
SQD/B01-P	Diffuse Sn= 1000mm
SQD/B02-C	Diffuse Sn= 2000mm
SQD/B02-P	Diffuse Sn= 2000mm
SQD/C01-C	Diffuse Sn= 1000mm
SQD/C02-C	Diffuse Sn= 2000mm
SQE/0D20-C	Through-beam Emitter Sn=20m
SQE/0D20-P	Through-beam Emitter Sn=20m
SQG/B00.5-C	Diffuse BS Sn= 120mm to 500mm
SQP/B06-C	Polarized Retro Sn=6m
SQP/B06-P	Polarized Retro Sn=6m
SQR/B020-C	Through-beam Receiver Sn=20m
SQR/B020-P	Through-beam Receiver Sn=20m

ASPRO Area Photoelectric Sensors



IP67 Rated
Retro-Reflective Sensors



Part No.	Description
ASPRO/0B-1T	M12 Pigtail DC NO/NC PNP+NPN
ASPRO/0I-1T	M12 Pigtail DC IO Link
ASPRO/0T-1T	M12 Pigtail DC NO/NC Push Pull
ASPRO/BN-1T	M12 Pigtail DC NO+NC NPN

M18 Barrel Photoelectric Sensors



FA Series: IP67 Rated
FF Series: IP67, IP68 & IP69K



Part No.	Description
FAI7/BP-0E	Diffuse Infrared 0.4m PNP
FAI4/BP-0E	Diffuse Infrared 0.2m PNP
FAIC/BP-0E	Retro-Reflective Infrared 4m PNP
FAIH/00-0E	Through Beam-Emitter Infrared
FAID/0P-0E	Through Beam-Receiver Infrared 20m PNP
FFI7/BP-1E	Diffuse 0.4m PNP*
FFI8/BP-1E	Diffuse 0.8m PNP*
FFIH/00-1E	Through-Beam Emitter*
FFIZ/BN-1E	Through-Beam Receiver 20m NPN*
FFIZ/BP-1E	Through-Beam Receiver 20m PNP*
FFRL/BP-1E	Polarized-Retro 1m PNP*
FFRN/BP-1E	Polarized-Retro 4m PNP*
Red Laser Models - Diffuse Reflection	
FAL4/BP-1E	PNP Sn=300mm Adjustable*
Red Laser Models - Through Beam	
FALD/BN-1E	Receiver Sn=50m Adjustable*
FALD/BP-1E	Receiver PNP Sn=50m Adjustable*
FALD/BP-3E	Receiver PNP Sn=50m Adjustable 90° Optic*
FALH/X0-0E	Emitter With Check Input**
FALH/X0-1E	Emitter With Check Input*
Red Laser Models - Polarized Retro Reflective	
FALN/BN-0E	NPN Sn=35m Adj.**,*
FALN/BN-1E	NPN Sn=35m Adjustable*
FALN/BN-3E	NPN Sn=35m Adjustable 90° Optic*
FALN/BP-0E	PNP Sn=35m Adjustable**
FALN/BP-1E	PNP Sn=30m*
FALN/BP-3E	PNP Sn=30m 90° Optic*

* Metal Body
** PBT Body

IMO Worldwide Offices

IMO Precision Controls Limited

The Interchange
Frobisher Way
Hatfield, Herts AL10 9TG
United Kingdom

Tel: 01707 414 444
Fax: 01707 414 445
Email: imo@imopc.com
Web: www.imopc.com

IMO Jeambrun Automation SAS

Parc de la Broye
14 Rue du Chafour
France
59710 ENNEVELIN

Tel: 0800 912 712 (n° gratuit)
Email: imo-fr@imopc.com
Web: www.imojeambrun.fr

IMO Automazione

Via Belfiore 10
50144 Firenze (FI)
Italia

Tel: 800 930 872 (toll free)
Email: imo-it@imopc.com
Web: www.imopc.it

IMO Automation LLC

Suite 112
5910 Shiloh Road East
Alpharetta, GA 30005
USA

Tel: 404 476 8810

Email: sales-na@imopc.com
Web: www.imoautomation.com

IMO Canada

1B-701 Rossland Road East
Suite #608
Whitby, Ontario L1N 9K3
Canada

Tel: 905 799 9237

Email: sales-na@imopc.com
Web: www.imopc.com

IMO South Africa (Pty) Ltd

5 Osdam Business Park
Columbus Cres. Parklands
Cape Town 7441
South Africa

Tel: 021 551 1787

Email: info@imopc.co.za
Web: www.imopc.co.za

IMO Pacific Pty Ltd

Unit 9, Dillington Pass
Landsdale
Perth WA 6065
Australia

Tel: 1300 34 21 31

Email: sales@imopacific.com.au
Web: www.imopacific.com.au

IMO Pacific Pty Ltd

12/84 Old Pittwater Road
Brookvale
Sydney NSW 2100
Australia

Tel: 02 8021 5115

Email: sales@imopacific.com.au
Web: www.imopacific.com.au



LinkedIn

Connect with us and follow
IMO Automation for the latest
news, views and reviews



Errors and omissions excepted. Subject to change without notice.
Information correct at time of print.

CAT-USSTARLINE-0124